

Brunswick Park Primary School



Brunswick Park
Primary School

e-Newsletter

 @BrunswickParkPS

 brunswickparkps

Friday 2 February 2024

Tel: 020 7525 9033

www.brunswickparkprimary.co.uk

Dear Parents and Carers

February's Focus Value is **HONESTY**

Welcome to the latest Newsletter of this short term - there are only 5 school days before Half Term - and time is flying. It has been a pleasure to see so many of you at our Sharing Assemblies, and support our Year 5 pupils in their fundraising efforts for Unicef as part of their personal development. They have begun the year's project magnificently through the sale of their own Anime artwork, and after spending only £15 on resources, they made a profit for the charity of **£115!** Great work. Another important aspect of personal development is showing children a broad range of role models. We want to broaden our children's horizons and deepen their knowledge of the world around them, and one of our most valuable resources to do this is you. Anna sent an invitation yesterday to all parents and carers to volunteer to be a Guest Speaker in assembly. We would like to hear from people who work in professions other than education, or who have had a significant experience to share, or who celebrate different festivals. In previous years we have welcomed several parents including an A&E doctor, a parent who has a lifelong medical condition, a space scientist, and a parent whose family celebrates Eid. Many thanks to those speedy folk who have already volunteered - the children are in for some treats - and if you haven't yet, there's still time. You have so much to share, and we will help you.

Lastly from me, a plea: it is good for the children to have real objects to play with. If you have any broken appliances or kitchen utensils, our Nursery and Reception children would love to play with them, and if you have old toys and clothes that we can use, or materials for junk modelling, please bring them to the School Office.

With best wishes for a peaceful and enjoyable fortnight ahead.

Susannah Bellingham

Head Teacher



Children break up for the Half Term holiday on

Friday 9 February.

They return to school on **Monday 19 February.**

DIARY DATES ARE ON THE WEBSITE

**PLEASE CHECK YOUR CHILD'S CURRICULUM LEAFLET FOR DATES RELATING TO THEIR CLASS
SEVERAL CLASSES ARE HAVING MARBLE TREATS NEXT WEEK: LETTERS HAVE BEEN EMAILED**

SAFER INTERNET DAY: TUESDAY 6 FEBRUARY

YEARS 4 AND 5 LUDICROUS LAMP SHOW: THURSDAY 8 FEBRUARY

YEAR 3 SHARING ASSEMBLY: FRIDAY 9 FEBRUARY

YEAR 2 SHARING ASSEMBLY: FRIDAY 23 FEBRUARY

BPFA CAKE/BAKE SALE: FRIDAY 23 FEBRUARY

HALF TERM IS 12-16 FEBRUARY: CHILDREN RETURN TO SCHOOL ON MONDAY 19 FEBRUARY

TERM DATES ARE ALWAYS ON THE NEWSLETTER AND THE WEBSITE

Learning for living through respect, support and challenge



Safer Internet Day

6 February 2024

www.saferinternet.org.uk

**Inspiring change?
Making a
difference,
managing
influence and
navigating
change online.**

This year's Safer Internet Day is on 6 February, and at Brunswick Park will be marked with celebrations and learning based around the theme 'Inspiring change? Making a difference, managing influence and navigating change online'.

Safer Internet Day is the UK's biggest celebration of online safety.

Each year we cover an online issue or theme that speaks to the things young people are seeing and experiencing online. Created in consultation with young people across the UK, this year Safer Internet Day will be focusing on change online. This includes covering:

Young people's perspective on new and emerging technology;

Using the internet to make change for the better;

The changes young people want to see online;

The things that can influence and change the way young people think, feel and act online and offline.

Coordinated in the UK by the UK Safer Internet Centre, the celebration sees thousands of organisations get involved to promote the safe, responsible and positive use of digital technology for children and young people.

Use this QR code for more information about the day:



and this one for more information for parents:



Happy New Year from the BPFA!

The Brunswick Park Families Association is your Friends and Families Association – separate from the school – which raises money to support school priority areas.

When the school needs funds for specific projects that align with these areas, staff at the school can bid for them. The BPFA then allocates funds to successful bids. At present the BPFA is raising funds for:

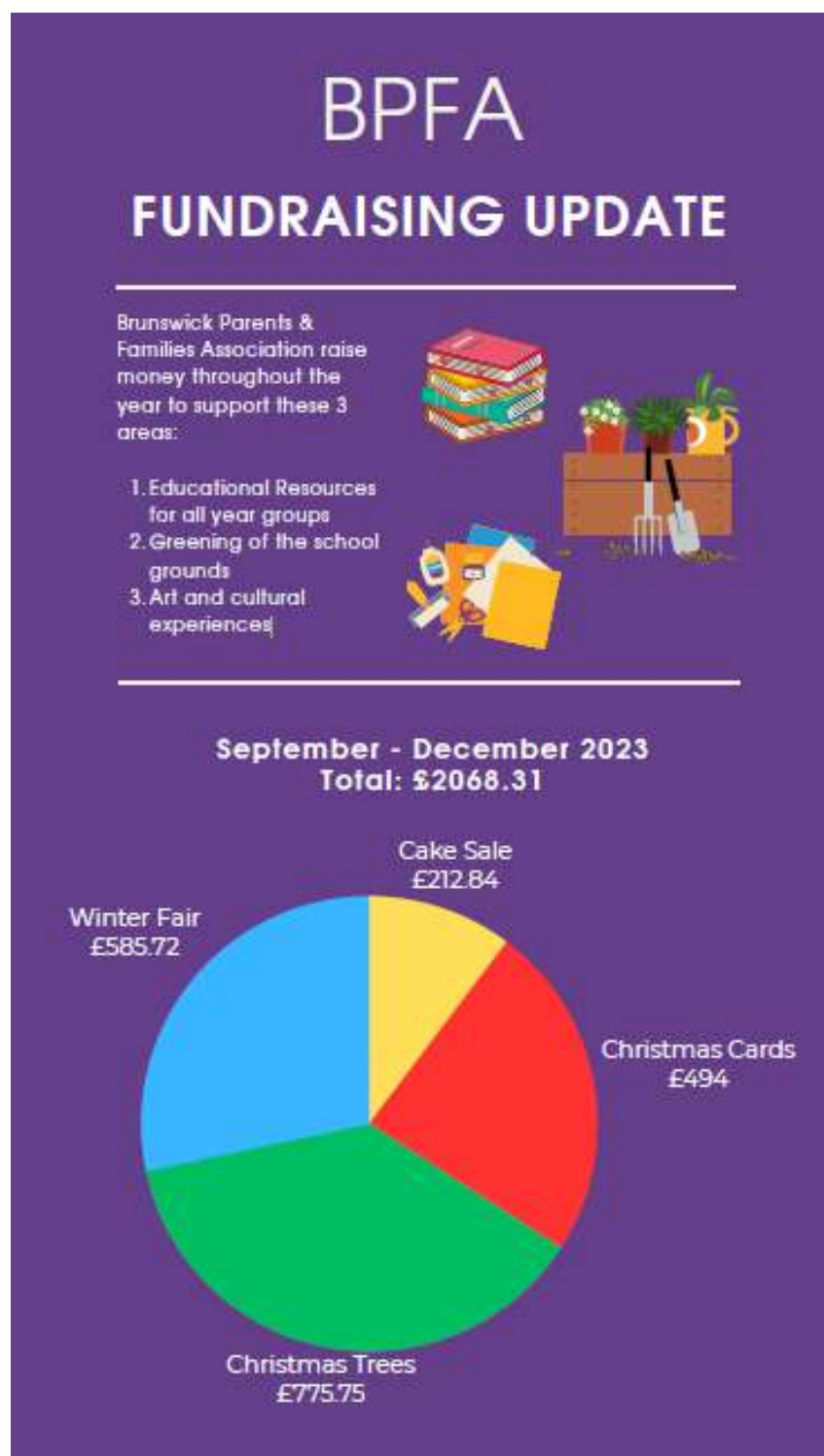
Educational resources for all year groups

Greening of the school grounds

Art and cultural experiences

The Association has had an amazing start to the year, and is now officially a charity. Charities are given numbers to identify them. The BPFA's 1206471, and you can look it up on the Charity Commission website.

This is what the BPFA has achieved since September 2023:



Thank you everyone for all your hard work and contributions!
The BPFa will show how this money is spent shortly.

In order to make fundraising a little easier we would like to introduce you to

www.easyfundraising.org.uk

This is an app and website that you can download or use as a browser when you are buying things. The shops and websites you buy from, like Morrison's, Tesco, Sainsbury's and John Lewis, make a charitable donation every time you shop there. There are over 200 retailers in the scheme, and it doesn't cost you anything.

Now the BPFa is a charity, it is on easyfundraising.org.uk. If you sign up and nominate the **Brunswick Park Families Association CAMBERWELL** as your charity, every time you shop, the Brunswick Park Families Association gets a donation. If you sign up in the next 7 days, the BPFa gets an additional £1 per signup! Anyone can sign up - they do not have to be associated with the school - so please tell everyone you know!

Follow this link or QR code to sign up:

<https://www.easyfundraising.org.uk/causes/brunswick-park-families-association>

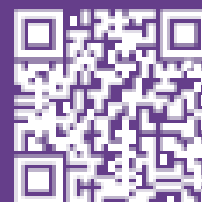


We Need Your Help & Support



Can you bake? Join our baking what's app to bake for our next cake sale.

Do you have experience writing funding grants? We are applying for grants this year and need more support.



We are putting on an event coinciding with Eid this year. We are looking for celebrators to help plan and organise this. [Join us here](#) or via the QR code



Department
for Education

Message about MEASLES

There have been recent localised outbreaks of measles centred around the West Midlands.

There is a risk of further outbreaks in other areas unless urgent action is taken to increase Measles, Mumps and Rubella (MMR) vaccination take up in areas with low MMR vaccine rates.

Measles spreads very easily among those who are unvaccinated, especially in nurseries and schools.

The best protection against measles for children and adults is to get both doses of the MMR vaccine

It is never too late to have these vaccinations.

Need to know more? Go to www.nhs.uk/conditions/measles and

The Education Hub Blog that has guidance for parents on measles and the MMR vaccine on

<https://educationhub.blog.gov.uk>

[What to do if you think your child has measles and when to keep them off school](#)

Cases of measles are rising across England, including among children. It's an infection that spreads very easily and for some people can cause serious problems. There's no specific medical treatment for measles, so it's important to get vaccinated as it's ...

[Read more](#)



A space for families to meet an artist and get drawing!

ROCK • PAPER • SCISSORS

FAMILY



STUDIO

With artists Anna Paterson, Dunya Kalantery, Habiba Nabisubi, Olivia Twist and Rhys Coren.

5th November, 3rd December, 14th January,
4th February, 3rd March, 7th April, 5th May,
2nd June, 7th July, 4th August

Drawing Room, New Tannery Way, Bermondsey
London, SE1 5WS. Enter from Grange Road

Bus Routes:
1, 78, C10, 42
Stations: Bermondsey,
London Bridge

07438 277 020
genevieve@drawingroom.org.uk
www.drawingroom.org.uk
@drawingroom_ldn/

Supported by
Freelands
Foundation

DRAWING ROOM

Drop-in
10.30 – 3.00pm
All Free!
All Welcome!

For our next Family Studio, artist Olivia Twist will transform the Community Studio into a pretend cinema! Children and families can create their own imaginary popcorn, draw film posters and more. All ages welcome. Materials provided. All free! All welcome! Sunday 4 February

What Parents & Carers Need to Know about PERSUASIVE DESIGN ONLINE

'Persuasive design' refers to the techniques that companies employ to influence our thoughts and behaviours when we're on the internet. These approaches can be spotted on websites, in apps and even as part of some video games. Persuasive design means that this content has been deliberately presented in a way that's intended to encourage you to spend your time or money (or both). These methods often prove highly effective at keeping people engaged and invested for longer than we might expect.

WHAT ARE THE RISKS?

POTENTIAL ADDICTION

In the digital world, persuasive design can make certain activities more addictive and harder to walk away from: some people may begin to feel anxious or irritated without access to their device or their favourite app, for example. It can also often leave users feeling isolated, as – if they spend most of their time on social media – they may start to find it difficult to talk to other people in real life.

MENTAL HEALTH CONCERNS

Scrolling online or gaming without regular breaks is proven to be harmful to our mental health. The constant bombardment of news stories (many of them negative), images and influencers' posts can create sensations of unease, uncertainty and FOMO (fear of missing out). Young people can get so immersed in this environment that they become less likely to spot misleading posts.

PROLONGED SCROLLING

Social media can draw any of us – regardless of age – into a continuous pattern of refreshing our screen, following posts and links down rabbit holes or reading countless comments made by others. This aimless scrolling can eat up time which could have been spent on more productive activities. It could also lead younger users into areas of the online world which aren't age appropriate.

SENSORY OVERLOAD

Repetitively scrolling, clicking on links or playing games can create an unending stream of new information and visual stimuli. Put it this way: social media isn't exactly renowned as a carefree, chilled-out environment. Such overstimulation can become too much for young people to handle, resulting in sensory overload and causing them to feel stressed, overwhelmed and exhausted.

COSTLY ADDITIONS

Video games sometimes display offers for downloadable content or loot boxes which can be bought with real money. While these 'microtransactions' temptingly promise to improve a player's gaming experience, most of the time they are money sinks. Young people in particular, excited by the chance of enhancing their game, could spend quite a sizeable sum very quickly indeed.

PHYSICAL CONSEQUENCES

Hours spent sitting and scrolling means far less time moving around and getting exercise: hardly ideal for a young person's physical health. Additionally, prolonged exposure to the light given off by a phone's screen can lead to eye fatigue and discomfort, especially if viewing it in the dark. Extended phone use before bed can also impact on sleep quality, affecting mood and energy levels over the following days.

Advice for Parents & Carers

ESTABLISH LIMITS

Talk to your child about setting some time limits on how long they can use their phone, tablet or console in the evenings or at weekends – or perhaps how often they can go on a specific app, game or website. You could also decide to involve the whole family in creating this shared screen time agreement, making things fair (and healthier) for everyone.

NIX NOTIFICATIONS

Stop knee-jerk responses at the source by turning off push notifications and alerts. Whether it's a gaming notification or a social media update, these not-so-gentle reminders are designed to catch our attention and lure us back to our device. Switching them off – or even deleting any particularly intrusive apps – can help prevent your child from being reeled back into the online world.

ENCOURAGE MINDFULNESS

Acknowledging any addiction is key in overcoming it – and compulsive scrolling is no different. If anything mentioned in this guide sounds familiar, it could help to have an honest, open chat with your child about how much time they spend online. Get them to think about how often they scroll through social media aimlessly or habitually open it up whenever they have a spare moment.

MAKE A CHECKLIST

Considering a list of relevant questions can be an effective way of helping children figure out why they're scrolling on certain sites or consuming particular pieces of content. A checklist can prompt young people to ask themselves if they're learning anything or benefiting from this activity – or if they're wasting their time. Taking a step back can sometimes help us to see things more clearly.

Meet Our Expert

Rebecca Jennings has more than 20 years' experience in the field of relational skills, sex and health education (RSHE). As well as delivering workshops and training for young people, parents and schools, she is also a subject matter expert on RSHE for the Department of Education.



The National College

NOS
National Online Safety
#WakeUpWednesday

What Parents & Carers Need to Know about

MYLOL

AGE RESTRICTION
13-19

MyLOL is a free social networking and dating site aimed at teens. Profiles can publicly display users' images and information, including sexual orientation and personal interests. The service bills itself as "the number one teen dating website in the world", claiming to have more than a million users globally. Despite its popularity, the MyLOL app is no longer available from Google Play or the App Store, although the site is still active. In some countries, police forces and schools have previously warned parents about "sinister predators" and "inappropriate activities" on the site.

WHAT ARE THE RISKS?

FLIMSY AGE GATES

Although MyLOL states it is exclusively aimed at users aged between 13 and 18, there is no credible age verification system to prevent a younger child – or an older adult – from signing up to the platform. Coupled with the fact that it's impossible to establish a user's true identity on MyLOL, this raises a serious concern that the site could be used for grooming.

AGE-INAPPROPRIATE CONTENT

MyLOL maintains that it monitors all uploaded images for nudity or sexual content. It also claims to be able to detect suspicious keywords. However, there have been numerous reports of explicit content being found on the platform, with users often posting provocative, semi-nude pictures of themselves and engaging in flirty or sexually explicit conversation.

POTENTIAL CYBER-BULLYING

MyLOL lets users 'vote' on other people based solely on their appearance, much in the same vein as the now-defunct site Hot or Not. This feature could easily lead to distress and bullying, especially if a young person's profile pics receive an unfavourable response. Various reviews of MyLOL have noted that bullying frequently becomes an issue in the platform's chat groups and private messages.

IN-APP SPENDING

MyLOL is free to join and use, but it also offers paid-for memberships. Users who have paid money get their profile promoted at the top of the site and in search results. They can also earn additional credits for increased engagement with the platform – such as sharing, replying to messages and voting. At the time of writing, the monthly membership fee was \$9.95 (just under £8).

DATA COLLECTION

According to its privacy policy, MyLOL collects user data including email addresses, contact details and interests. While the company says it is committed to protecting users' privacy, the small print states that information may be shared externally. MyLOL claims to follow procedures to keep data secure, but does not specify what these procedures are, or whether such information is encrypted.

CONTACT FROM STRANGERS

MyLOL makes it easy to connect with strangers. In fact, the site's rewards feature encourages users to send private messages to people they don't know. There have been several media stories of adults posing as teens on MyLOL to connect with minors, which could lead to extremely dangerous situations, such as a young person meeting up with someone who has been posing under a false identity.

Advice for Parents & Carers

DISCUSS ONLINE DATING

It's vital to talk to your child about the possible dangers of platforms like MyLOL – particularly the threat of online predators. Remind them of the risks of sharing intimate images and information with strangers and emphasise that most people don't realise they're being 'catfished' until it's too late – it really isn't wise for a young person to meet up with someone they've only spoken to online.

EXPLAIN PRIVACY RISKS

Before your child begins using a service such as MyLOL, it's important that they understand the potential pitfalls of giving out their personal data on this type of platform. Explain to them, for example, that they shouldn't divulge any personally identifying information to people who they don't know, as scammers can be quite convincing when attempting to steal someone's identity.

RESTRICT IN-APP SPENDING

If your child has access to a bank card or other payment method, they may be enticed into signing up for MyLOL's premium features. Having their profile boosted and receiving more attention could be especially tempting if their friends also use the site. You could consider altering their device's settings to disable internet purchases, or at the very least keeping an eye on their online spending.

SET UP LOCATION ALERTS

If you're worried that your child may be planning to meet up with someone they've met on MyLOL, you could consider utilising GPS or WiFi location tracking technology to follow their whereabouts in real time. You can even set up a virtual boundary or 'fence' and opt to receive an alert to your phone if your child enters or exits a specified area.

Meet Our Expert

Carly Page is an experienced technology journalist with a track record of more than 10 years in the industry. Previously the editor of tech tabloid The Inquirer, Carly is now a freelance technology journalist, editor and consultant.



The National College



National Online Safety

#WakeUpWednesday



The Play Shelter runs an After School Club at Brunswick Park Primary School in the school's dining hall from 3.30pm - 6.00pm Monday to Friday, catering for children aged 4 - 11 years old.

Currently the club is over subscribed and running a waiting list.

We know parents need the provision, and we could take more children if we could recruit more staff to work with us.

We are recruiting Play Leaders to work at the After School Club.

Please see the Job Description and how to apply below. We would love to hear from you!



After School Club Play Leaders

Required to work term time.

Starting Salary £10.42 per hour – 15 hours week

Applicants must have experience of working in an After School Club, Holiday Play Scheme or a similar play or educational environment, preferably with children aged 4 – 12 years. A commitment to quality and equality is vital. Applicants must have confident skills and abilities in providing play opportunities through a wide range of activities i.e. creative arts and Crafts, cookery, music/drama and indoor/outdoor sports. It is important that the post holder has a cheerful personality, teamwork skills, communicates and works well with groups of junior children, infant children and parents.

Applicants will be expected to have NVQ II Play work / Childcare or an equivalent qualification.

Career progression into senior roles is encouraged and supported.

For an application form contact Gemma Hinton quoting **ASCPL** on 07981 931 408 email: area.managertps@gmail.com

Keeping up to date with Brunswick Park on Social Media



Resource Base
@ResourceBaseBP



EYFS
@EyfsBPPS



Year 1
@Year1BPPS



Year 2
@Year2BPPS



Year 3
@Year3BPPS



Year 4
@Year4BPPS



Years 5
@Year5BPPS



Year 6
@Year6BPPS



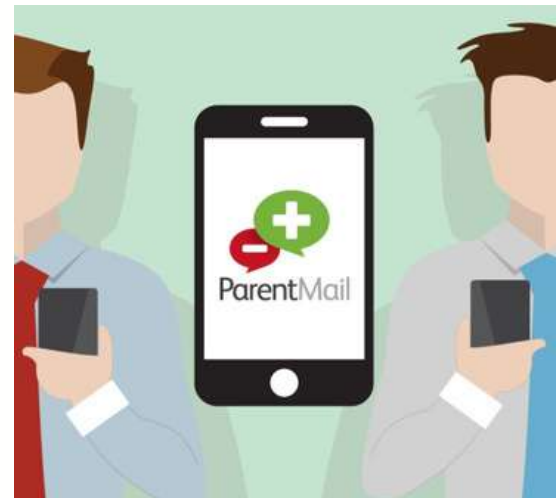
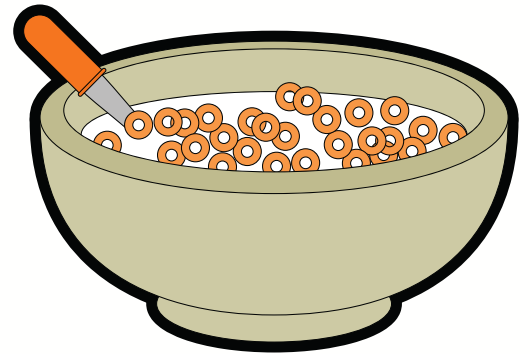
Whole School
on X @BrunswickParkPS
on Instagram @brunswickparkps

Brunswick Park Breakfast Club

Reception - Year 6

£15 per week

regardless of the number of days children attend,
payable a week in advance at the School Office
and online via ParentMail.



7.45am until the start of the school day, Monday - Friday

In the Dining Hall, run by Brunswick's own staff: Mikaela, Linda and Karen
Nursery Breakfast Club details available from the School Office

Term Dates 2023/2024

ACADEMIC YEAR 2023-2024

DO NOT BOOK HOLIDAY IN TERM TIME

CHILDREN ARE ENTITLED TO 190 DAYS' EDUCATION PER YEAR

Autumn Term

HALF TERM 1: Monday 4 September 2023 to Friday 20 October 2023

INSET DAY ON MONDAY 4 SEPTEMBER

CHILDREN RETURN TO SCHOOL ON TUESDAY 5 SEPTEMBER

HALF TERM BREAK: Monday 23 October 2023 to Friday 27 October 2023

HALF TERM 2: Monday 30 October 2022 to Wednesday 20 December 2023

Spring Term

HALF TERM 3: Monday 8 January 2024 to Friday 9 February 2024

HALF TERM BREAK: Monday 12 February 2024 to Friday 16 February 2024

HALF TERM 4: Monday 19 February 2024 to Thursday 28 March 2024

Summer Term

HALF TERM 5: Monday 15 April 2024 to Friday 24 May 2024

(May Day bank holiday will be taken on 6 May)

HALF TERM BREAK: Monday 27 May 2024 to Friday 31 May 2024

HALF TERM 6: Monday 3 June 2024 to Thursday 25 July 2024

INSET DAYS MONDAY 22, TUESDAY 23, WEDNESDAY 24, THURSDAY 25 JULY

LAST DAY IN SCHOOL FOR CHILDREN IS FRIDAY 19 JULY 2024

Children finish at 2.00pm on 20 December 2023, 28 March 2024 and 19 July 2024

Public Holidays:

Monday 25 December 2023:	Christmas Day Holiday
Tuesday 26 December 2023:	Boxing Day Holiday
Monday 1 January 2024:	New Year Holiday
Friday 29 March 2024:	Good Friday
Monday 1 April 2024:	Easter Monday
Monday 6 May 2024:	May Day Bank Holiday
Monday 27 May 2024:	Spring Bank Holiday
Monday 26 August 2024:	Summer Bank Holiday

School term and holiday dates

Academic year 2024/25

Autumn term

- Monday 2 September 2024 to Friday 25 October 2024
- Half Term - Monday 28 October 2024 to Friday 1 November 2024
- Monday 4 November 2024 to Friday 20 December 2024

Spring term

- Monday 6 January 2025 to Friday 14 February 2025
- Half Term - Monday 17 February 2025 to Friday 21 February 2025
- Monday 24 February 2025 to Friday 4 April 2025

Summer term

- Tuesday 22 April 2025 to Friday 23 May 2025 (May Day bank holiday will be taken on 5 May)
- Half Term - Monday 26 May 2025 to Friday 30 May 2025
- Monday 2 June 2025 to Tuesday 22 July 2025



Aimed at 2-4 year-olds, the app is **free to download with no adverts or in-app purchases** and children can play independently and offline, wherever they are.

It's packed with **free CBeebies and BBC Bitesize games and videos** featuring CBeebies characters, and all the activities are based on the **Early Years Foundation Stage (EYFS) curriculum.**



On the Homepage of Brunswick's website there is the Events Diary, our X (Twitter) Feed and Quick Links to all the information you need. Please use it to stay up to date; it is there to help you.

Making payments for goods and services at school

Payments for uniform, trips, Breakfast Club, top-up fees and Nursery After School Club can all be made either in cash at the School Office, or online, via ParentMail.

To pay for uniform online using ParentMail, you need to log in to your account and pay for the item/s before you collect them from the School on Wednesdays.

Uniform can now be bought online directly from MAPAC via this link:

<https://www.mapac.com/education/parents/uniform/brunswickparkse57qh>

To pay for all other services - trips, Breakfast Club, top-up fees and Nursery After School Club - make sure your ParentMail account is registered to pay for the services you need, then you can pay for them online.

If you need support to register, please see the School Office Staff.

WE HOPE THIS HELPS!

Uniform - sales in school and online via MAPAC

Sweatshirts, cardigans, bookbags and swimming hats are still available to buy or collect from the School Office on **Wednesdays from 3.30-4.00pm**. If you choose to pay in cash, please bring the right money as we cannot give change. If you choose to pay online via ParentMail, please pay for your item/s before coming to collect them.

YOU CAN BUY UNIFORM DIRECT FROM MAPAC FOR DELIVERY TO YOUR HOME:

USE THIS LINK - also on the school website -

<https://www.mapac.com/education/parents/uniform/brunswickparkse57qh>

Age 13 - adult sweatshirts = £10.00

All other sweatshirts = £8.00

Age 13 - adult cardigans = £13.00

All other cardigans = £11.00

Book Bags = £4.00

Swimming Hats = £1.00



SCHOOL UNIFORM, PE KIT AND PE DAYS

All children are expected to wear full school uniform daily, and the school PE kit on PE days.

Nursery and Reception children do not get changed for PE, so do not need school PE kit.

Children in Years 1-6 need school PE kit.

They come to school in their PE kit on PE days.



School PE kit is:

white T-shirt or white polo shirt
black shorts/leggings/joggers
school jumper/cardigan
white/black/grey socks
black trainers or plimsolls



Please do not send your child to school in non-uniform clothing.

Year Group	PE Day
Nursery	Thursday
Reception	Friday
Year 1	Monday
Year 2	Tuesday
Year 3	Thursday
Year 4	Wednesday
Year 5	Friday
Year 6	Wednesday
Resource Base	Tuesday



ATTENDANCE MATTERS

Pupil absence and lateness account for lost learning. Lessons start at 09:00. We need to make sure as many children as possible are present in school on time every day.

What YOU must do:

Try to telephone the school before 8.45am each day of your child's absence.

Tell the school in advance of any medical appointments, and bring in appointment cards/letters/texts.

If you are not sure whether your child is well enough to attend school, consult the NHS guidance:

<https://www.nhs.uk/live-well/is-my-child-too-ill-for-school/>

Children should be kept at home only if they have a serious illness or injury.

If a child has a minor ailment, e.g. headache or stomach ache, you should bring your child in and inform the teacher in person or via the school office.

These ailments are not considered serious enough to warrant absence from school.

If the child's condition worsens, we will contact you.

Have a backup plan for if your child misses transport to call on a family member, neighbour or friend.

If you and your child are experiencing difficulties with school attendance then talk to us as a first step so we can help!

What WE will do:

Check your child's attendance every day.

Phone home to discuss your child's attendance with you.

Invite you into school for attendance meetings if we are concerned.

If we cannot establish a reason for absence, then we may make a welfare home visit.

Celebrate good and improving school attendance.

Tracy Sherry is our Attendance Officer.

Bev Swack is our LA Family Early Help Practitioner.

Children need to:

Arrive at school by 08:50

Be seated in the classroom by 08:55

If children are not in their classrooms by 08:55 they are late.

All children, on time, every day, learning.

Your child is entitled to 190 days' education per year.

Reminders to all Parents and Carers

Correct School Uniform:

Please ensure your child comes to school in the correct uniform. All children must wear black shoes or plain black trainers, black or grey school trousers or skirts and socks and Hijabs should be plain white, black or grey. Grey or black shorts or purple checked summer dresses can be worn in warm weather.

Punctuality:

Please ensure your child arrives to school on time every day; arriving late is embarrassing and missed learning time affects achievement and stops your child from reaching his or her potential.

Parking:

Picton Street is now monitored by Council cameras from 08:30 - 09:15 and 15:00 - 16:00. If you arrive by car please factor this in, as you will need to park elsewhere and walk into Picton Street, or risk a warning/fine.

Safeguarding Information

The designated team for Safeguarding at Brunswick Park Primary is
Susannah Bellingham
Caroline Champion and
Thomas Moudiotis.

If you have any concerns about any child, please contact us.

We are committed to Safeguarding all children and members of our school community and take all concerns seriously.

For your information, key school policies are available on request from the School Office and can be downloaded from the school Website under the 'Our School' tab.

Please check the website, X (Twitter) and Instagram for further details about what children have been doing and learning in school.

Missed a newsletter? All newsletters are available for download from the School Website under the 'News' tab.

<http://www.brunswickparkprimary.co.uk>

Whole School Attendance this fortnight: 94%

Classes with the best attendance: 6A, (99%), 1B (97.9%), 5B (100%)

Classes with the highest number of minutes of lost learning time: RB1, 3B and Year 5

If your child needs to be absent from school for exceptional reasons, you need to complete an Exceptional Leave Request Form in good time beforehand, available on the website and from the School Office.

Remember - don't book holiday in term time - even if the tickets are cheaper - as it cannot be authorised unless circumstances are genuinely exceptional. Evidence must be provided.

Children are entitled to 190 days' education per year.

Whole School Attendance Target: 96%

Right to Reply:

02/02/24: Please email the address below to give us constructive suggestions or comments, including your name and your child's class.

Thank you.

office@brunswickpark.southwark.sch.uk