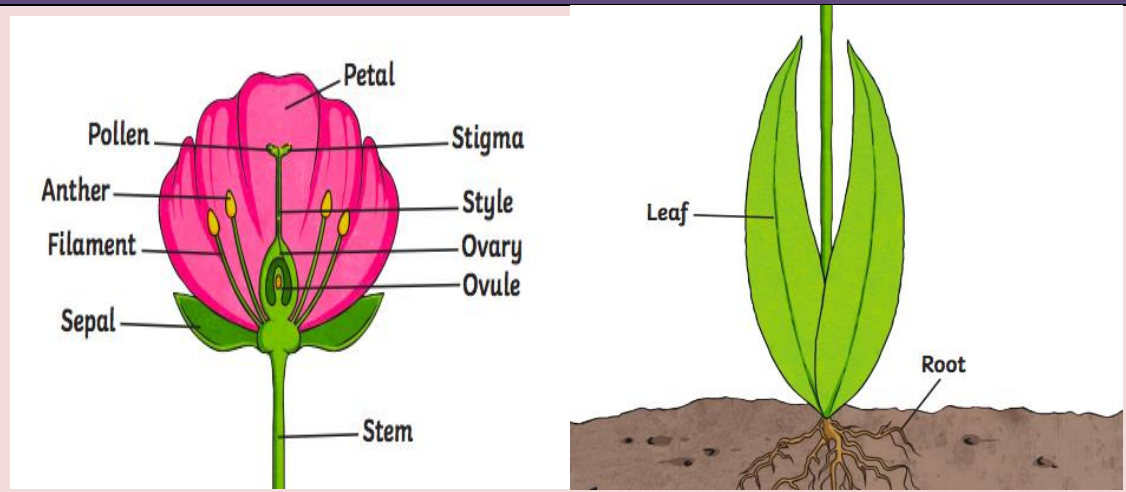


Year 3 Autumn 2 Science- Plants

Key Facts

1. The stages of a plant life cycle are the seed, germination, growth, reproduction, pollination, and seed spreading stages.
2. Pollination is when pollen is transferred from the male anther of a flower to the female stigma, which leads to fertilisation and the production of seeds.
3. The plant life cycle starts with a seed; every seed holds a miniature plant called the embryo.
4. Seed germination is when the seed takes in water from the soil which helps the root grow to allow the seed to get more water.
5. Transpiration, is where water evaporating from the leaves of a plant causes the plant to draw up more water from the roots.
6. Seed dispersal is the movement or transport of seeds away from the parent plant.
7. There are five main modes of seed dispersal: gravity, wind, ballistic, water, and by animals.



Scientific Skills

- Plan an enquiry
- Observe and measure accurately
- Record my results
- Say what I have found out

Key Vocabulary

- nutrients
- transport
- life-cycle
- pollination
- seed dispersal
- structure
- reproduce
- fertilisation
- pollen
- classify