

# Brunswick Park Primary School



**Brunswick Park**  
Primary School

**e-Newsletter**

X @BrunswickParkPS

Instagram brunswickparkps

Friday 22 September 2023

Tel: 020 7525 9033

[www.brunswickparkprimary.co.uk](http://www.brunswickparkprimary.co.uk)

Dear Parents and Carers

**September's Focus Value is RESPECT**

The heat has subsided – thankfully – the weather feels more appropriate for the time of year and the school is a comfortable place to be. We enjoyed a Year 6 Sharing Assembly this morning, including the very important affirmation, 'We are bold, strong and fearless', and some very high-quality children's writing. Brunswick Park is a Literacy Tree Flagship School for 2023-24 because our children are taught so well to write, and our children's work is used in training and at other schools as examples of good practice. Thanks to all the parents who came along to support their children in the assembly, and also to those who attended the meeting for Reception parents and carers this morning, hosted by Anna and Nicola. We appreciate the effort you are making to understand all we do in school to support the children to learn, particularly as so much has changed since our schooldays.

This Newsletter contains information about applying for secondary school places if your child is in Year 6, Open Days and some excellent sporting competition results. It also contains details about Wick Court Farm for those in Year 4, and the clubs after school that are being run this term. If you have not yet signed up for any of these, there are still some spaces left.

Finally, Tracy Sherry, our Attendance Officer, is working tirelessly to support Brunswick's children to receive their entitlement to education. The country-wide focus on improving school attendance is reflected in the Government's latest guidance, which is shared with you in this Newsletter. To be on time, children need to arrive before the bell is rung at 08:50, giving them 5 minutes to get to their classrooms where learning begins at 09:00. The gates are open from 08:45. Our attendance is improving, and I thank you for your support.

Wishing you a peaceful and enjoyable fortnight ahead.

Susannah Bellingham, Head Teacher

## Is your child in Year 6?

If so, it's time to apply for a place at secondary school for September 2024.

**Parents have until 31 October 2023 to apply online.**

The information you need was sent out on 15 September, and is available on

<https://www.southwark.gov.uk/schools-and-education/school-admissions/secondary-admissions>

**Parents/carers are welcome at our information session on 29 September at 3.30pm**

about secondary transfer, how the process works and what to look for at an Open Day.

**A reminder of the Southwark secondary school open day dates and times is below.**

If your child has an EHCP, secondary school provision is discussed at the Year 5 Annual Review, and applications are made through the SEND Admissions Team.

**DIARY DATES ARE ON THE WEBSITE**

**TERM DATES ARE ALWAYS ON THE NEWSLETTER AND THE WEBSITE**

*Learning for living through respect, support and challenge*

## Southwark Secondary School Open Dates 2023

### WEEK COMMENCING 11 SEPTEMBER 2023

	Mon	Tues	Weds	Thurs	Fri	Sat
<b>School</b>	<b>11/09/2023</b>	<b>12/09/2023</b>	<b>13/09/2023</b>	<b>14/09/2023</b>	<b>15/09/2023</b>	<b>16/09/2023</b>
Ark Walworth Academy				9:15 - 11:00am	9:15 - 11:00am	
Bacon's College				5:00 - 7:30pm		10:00am - 12:00pm
The Charter School Bermondsey				9:00 - 10:15am		

### WEEK COMMENCING 18 SEPTEMBER 2023

	Mon	Tues	Weds	Thurs	Fri	Sat
<b>School</b>	<b>18/09/2023</b>	<b>19/09/2023</b>	<b>20/09/2023</b>	<b>21/09/2023</b>	<b>22/09/2023</b>	<b>23/09/2023</b>
Ark Walworth Academy				9:15 - 11:00am		
Bacon's College			9:00 - 10:30am	9:00 - 10:30am		
Kingsdale Foundation School			Open day (all day)			Open day (all day)
South Bank University Academy			5:30 - 7:00pm			
St Saviours & St Olave's				Open evening	Open morning	
The Charter School Bermondsey	4:30 - 6:30pm	9:00 - 10:15am				
The City of London Academy				4:30 - 7:30pm		

### WEEK COMMENCING 25 SEPTEMBER 2023

	Mon	Tues	Weds	Thurs	Fri	Sat
<b>School</b>	<b>25/09/2023</b>	<b>26/09/2023</b>	<b>27/09/2023</b>	<b>28/09/2023</b>	<b>29/09/2023</b>	<b>30/09/2023</b>
Ark All Saints				9:30 - 10:00am		
Ark Globe Academy				9:00 - 10:30am		
Bacon's College				9:00 - 10:30am		9:00 - 10:30am
Haberdashers' Aske's Borough Academy				9:00 & 10.30am		
Harris Academy Bermondsey				Open evening		
Harris Boys' Academy East Dulwich				5:00 - 7:00pm		
Harris Girls' Academy East Dulwich				5:00 - 6:30pm		
Kingsdale Foundation School			Open day (all day)			
Notre Dame RC Girls' School			5:00 - 7:00pm		9:10 - 10:15am	
South Bank University Academy		9:00 - 10:15am	9:00 - 10:15am			
St Michael's Catholic College	9:30 - 11:30 & 4:40 - 7:30pm	9:30 - 11:30am	9:30 - 11:30am			
St Saviours & St Olave's		Open morning				
The Charter School Bermondsey			9:00 - 10:15am			
The Charter School East Dulwich				Open day		
The Charter School North Dulwich			Open day			
The City of London Academy		9:00 - 10:00am	9:00 - 10:00am		9:00 - 10:00am	

## Southwark Secondary School Open Dates 2023

### WEEK COMMENCING 2 OCTOBER 2023

	Mon	Tues	Weds	Thurs	Fri	Sat
<b>School</b>	<b>02/10/2023</b>	<b>03/10/2023</b>	<b>04/10/2023</b>	<b>05/10/2023</b>	<b>06/10/2023</b>	<b>07/10/2023</b>
Ark All Saints			5:00 - 6:00pm			
Ark Globe Academy		9:00 - 10:30am		4:30 - 7:00pm		
Haberdashers' Aske's Borough Academy				9am and 10.30am & 4pm to 7pm		
Harris Boys' Academy East Dulwich	8:45 - 10:30am	8:45 - 10:30am	8:45 - 10:30am			
Harris Girls' Academy East Dulwich	8:45 - 10:30am	8:45 - 10:30am	8:45 - 10:30am			
Kingsdale Foundation School			Open day (all day)			Open day (all day)
Notre Dame RC Girls' School				9:10 - 10:15am		
South Bank University Academy		9:00 - 10:15am	9:00 - 10:15am	9:00 - 10:15am		
St Saviours & St Olave's			Open morning			

### WEEK COMMENCING 9 OCTOBER 2023

	Mon	Tues	Weds	Thurs	Fri	Sat
<b>School</b>	<b>09/10/2023</b>	<b>10/10/2023</b>	<b>11/10/2023</b>	<b>12/10/2023</b>	<b>13/10/2023</b>	<b>14/10/2023</b>
Ark All Saints		9.30 - 10.30am	9.30 - 10.30am			
Ark Globe Academy		Tours only 9:00 - 10:30am				
Ark Walworth Academy		5:30 - 7:30pm				
Haberdashers' Aske's Borough Academy				9:00 & 10.30am		
Kingsdale Foundation School			Open day (all day)			Open day (all day)
Notre Dame RC Girls' School				4:00 - 6:00pm		
St Saviours & St Olave's	Open morning					
The Charter School Bermondsey	9:00 - 10:15am / 4:30 - 6:30pm					

### WEEK COMMENCING 16 OCTOBER 2023

	Mon	Tues	Weds	Thurs	Fri
<b>School</b>	<b>16/10/2023</b>	<b>17/10/2023</b>	<b>18/10/2023</b>	<b>19/10/2023</b>	<b>20/10/2023</b>
Ark All Saints			9.30 - 10.30am		
Ark Globe Academy		Tours only 9:00 - 10:30am			
Ark Walworth Academy					
Bacon's College					
Haberdashers' Aske's Borough Academy				9:00 & 10.30am	



# Harris Academy Bermondsey

55 Southwark Park Road, London, SE16 3TZ  
[reception@harrisbermondsey.org.uk](mailto:reception@harrisbermondsey.org.uk)  
[www.harrisbermondsey.org.uk](http://www.harrisbermondsey.org.uk)  
020 7237 9316  
[@HABermondsey](https://twitter.com/HABermondsey)

## AMBITION



## COMPASSION

At HAB we have  
an uncompromising  
yet caring approach



## RESPECT



Our Personal Development  
curriculum aims to develop  
students into confident, curious,  
respectful, resilient and ambitious  
young people.

### Open Evening

Thursday 28 September 4.30 – 7pm

### Open Mornings

Thursday 14 September 9.15 – 10am

Tuesday 19 September 9.15 – 10am

Tuesday 26 September 9.15 – 10am

Wednesday 4 October 9.15 – 10am

Register here:



[https://bit.ly/HAB\\_OpenEvents\\_2023](https://bit.ly/HAB_OpenEvents_2023)

## Clubs After School

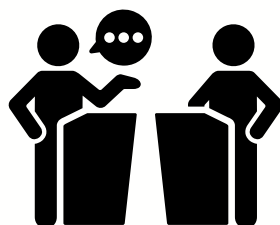
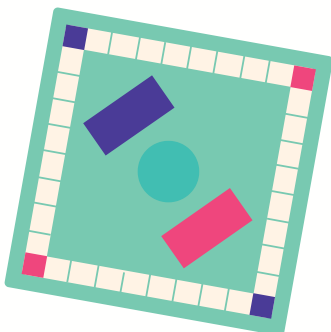
### Brunswick Park Extra-Curricular Clubs Offer 2023-2024 – Autumn Term

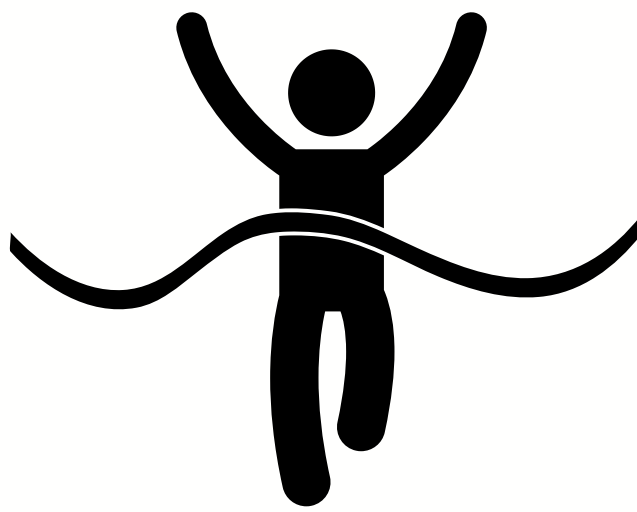
	Reception - Year 2	Adult	Year 3 - Year 6	Adult
Monday			Debate	Sarah
Tuesday	Board Games	Gina	Board Games	Gina
Wednesday	Art and Craft	Gina		
Thursday	Lego (Y1-6)	Mr Moudiotis	Lego (Y1-6)	Mr Moudiotis
Friday	Dance (Y2-6)	Chantelle	Dance (Y2-6)	Chantelle

We have a few spaces left in these clubs. Please contact the School Office for details and charging information.

In addition to these clubs, there are Sports Clubs run by Andrew Payne and Southwark Gymnastics.

Details and how to book are on the next page.





## **Brunswick's Cross Country Success**

On Tuesday 19 September a group of children in Years 5 and 6 attended a Southwark Schools Cross Country competition at Burgess Park.

All of the children performed well in this tough event, and we are very proud of them.

In the girls' event Victoria was placed 3rd, Ejiro was 6th and Kamar was 8th.

In the boys' event Freddie won, Bryan was placed 5th, Stanley 7th and Leon was 8th.

After all the results were combined, Brunswick Park were 1st overall, beating Dulwich Wood in 2nd and Pilgrims way in 3rd.

We will be presented with a trophy, and there will be medals for the children who finished in the top three in their respective races.

A huge well done to all of the children who took part and heartfelt thanks to the parents and carers who supported us.

---

## **Sports Clubs**

**There are still a few spaces left in after school sports clubs.**

We have spaces in Basketball (Years 4 to 6), Football (Years 5 and 6), Multisports (Years 2 and 3), Dance (Years 2 to 6) and Athletics (Years 4 to 6).

Multisports, Basketball and Athletics are free sessions but children must be registered online before they can take part.

**Spaces can be booked at [www.bookwhen.com/brunswick](http://www.bookwhen.com/brunswick)**

**PLEASE NOTE:** children attending after school sports clubs must have the correct PE kit and footwear in order to take part.

# ATTENDANCE MATTERS

Pupil absence and lateness account for lost learning. Lessons start at 09:00.  
We need to make sure as many children as possible are present in school on time every day.

## What YOU must do:

Try to telephone the school before 8.30am each day of your child's absence.

Tell the school in advance of any medical appointments, and bring in appointment cards/letters.

If you are not sure whether your child is well enough to attend school, send them in anyway as they often perk up on arrival, or consult the NHS guidance:

<https://www.nhs.uk/live-well/is-my-child-too-ill-for-school/>

Have a backup plan for if your child misses transport to call on a family member, neighbour or friend.

**If you and your child are experiencing difficulties with school attendance then talk to us as a first step so we can help!**

## What WE will do:

Check your child's attendance every day.

Phone home to discuss your child's attendance with you.

Invite you into school for attendance meetings if we are concerned.

If we cannot establish a reason for absence, then we may make a welfare home visit.

**Tracy Sherry is our Attendance Officer.**

**Bev Swack is our LA Family Early Help Practitioner.**

## Children need to:

**Arrive at school by 08:50**

**Be seated in the classroom by 08:55**

**If children are not in their classrooms by 08:55 they are late.**

**Let's start as we mean to go on:  
all children, on time, every day**



## **Wick Court Farm, Gloucestershire**

We are planning a residential trip for our Year 4 children to Wick Court Farm from 18-22 March 2024. The trip will cost £340 per child, and includes all board, lodging, transport and activities. Payment can be made in instalments.

Wick Court Farm is a working farm in Gloucestershire

It is run by a charity called Farms for City Children, founded by the author Michael Morpurgo.

Its mission is to give children living in urban areas the chance to experience being in the countryside on a farm and to see how our food is produced.

Children will help look after the farm animals, taking part in activities such as grooming horses, feeding and weighing piglets, collecting eggs from the henhouse and feeding cows.

They also learn vital teamwork skills by helping with cooking and washing up. The visit will build children's independence, and their thinking and communication skills.

Above all, it will be fun, and will give the children a valuable life experience they cannot get in London.

Details of the trip were sent to parents in July, and on 14 September. We will send them out again next week, along with an SMS reminder.

For the trip to go ahead, we need to take 36 children.

It is a wonderful opportunity.

Please look out for a letter next week.

# SCHOOL UNIFORM, PE KIT AND PE DAYS

All children are expected to wear full school uniform daily, and the school PE kit on PE days.

Nursery and Reception children do not get changed for PE, so do not need school PE kit.

**Children in Years 1-6 need school PE kit.**

**They come to school in their PE kit on PE days.**



**School PE kit is:**  
white T-shirt or white polo shirt  
black shorts/leggings/joggers  
school jumper/cardigan  
white/black/grey socks  
black trainers or plimsolls



**Please do not send your child to school in non-uniform clothing.**

Year Group	PE Day
Nursery	Thursday
Reception	Friday
Year 1	Monday
Year 2	Tuesday
Year 3	Thursday
Year 4	Wednesday
Year 5	Friday
Year 6	Wednesday
Resource Base	Tuesday







On the Homepage of Brunswick's website there is the Events Diary, our X (Twitter) Feed and Quick Links to all the information you need. Please use it to stay up to date; it is there to help you.

## Uniform

Sweatshirts, cardigans, bookbags and swimming hats are available to buy or collect from the School Office on **Wednesdays from 3.30-4.00pm**. If you choose to pay in cash, please bring the right money as we cannot give change. If you choose to pay online via ParentMail, please pay for your item/s before coming to collect them.

**Age 13 - adult sweatshirts = £10.00**

**All other sweatshirts = £8.00**

**Age 13 - adult cardigans = £13.00**

**All other cardigans = £11.00**

**Book Bags = £4.00**

**Swimming Hats = £1.00**



### Making payments for goods and services at school

Payments for uniform, trips, Breakfast Club, top-up fees and Nursery After School Club can all be made either in cash at the School Office, or online, via ParentMail.

To pay for uniform online using ParentMail, you need to log in to your account and pay for the item/s before you collect them from the School on Wednesdays.

To pay for all other services - trips, Breakfast Club, top-up fees and Nursery After School Club - make sure your ParentMail account is registered to pay for the services you need, then you can pay for them online.

If you need support to register, please see the School Office Staff.

**WE HOPE THIS HELPS!**



## The Play Shelter After School Club @ Brunswick Park

**£55 per week**

**3.30 - 6.00pm Monday - Friday**

To register your child, contact the Centre Manager on **07905 007964**  
or visit the After School Club in the Dining Hall.

email: [admin@theplayshelter.co.uk](mailto:admin@theplayshelter.co.uk)

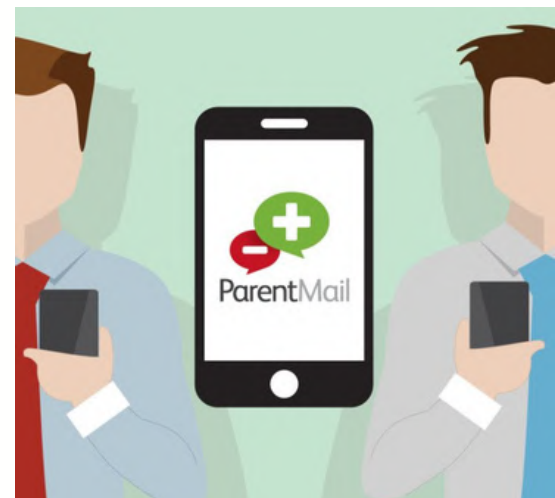
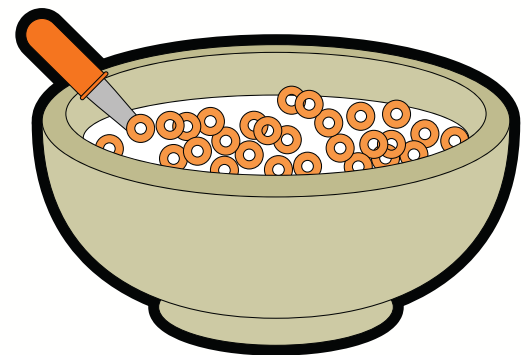
website: [www.theplayshelter.co.uk](http://www.theplayshelter.co.uk)

## Brunswick Park Breakfast Club

**Reception - Year 6**

**£15 per week**

regardless of the number of days children attend,  
payable a week in advance at the School Office  
and online via ParentMail.



**7.45am until the start of the school day, Monday - Friday**

In the Dining Hall, run by Brunswick's own staff: Mikaela, Linda and Karen  
Nursery Breakfast Club details available from the School Office

# Term Dates 2023/2024

## ACADEMIC YEAR 2023-2024

**DO NOT BOOK HOLIDAY IN TERM TIME**

**CHILDREN ARE ENTITLED TO 190 DAYS' EDUCATION PER YEAR**

### Autumn Term

**HALF TERM 1:** Monday 4 September 2023 to Friday 20 October 2023

**INSET DAY ON MONDAY 4 SEPTEMBER**

**CHILDREN RETURN TO SCHOOL ON TUESDAY 5 SEPTEMBER**

**HALF TERM BREAK:** Monday 23 October 2023 to Friday 27 October 2023

**HALF TERM 2:** Monday 30 October 2022 to Wednesday 20 December 2023

### Spring Term

**HALF TERM 3:** Monday 8 January 2024 to Friday 9 February 2024

**HALF TERM BREAK:** Monday 12 February 2024 to Friday 16 February 2024

**HALF TERM 4:** Monday 19 February 2024 to Thursday 28 March 2024

### Summer Term

**HALF TERM 5:** Monday 15 April 2024 to Friday 24 May 2024

(May Day bank holiday will be taken on 6 May)

**HALF TERM BREAK:** Monday 27 May 2024 to Friday 31 May 2024

**HALF TERM 6:** Monday 3 June 2024 to Thursday 25 July 2024

**INSET DAYS MONDAY 22, TUESDAY 23, WEDNESDAY 24, THURSDAY 25 JULY**

**LAST DAY IN SCHOOL FOR CHILDREN IS FRIDAY 19 JULY 2024**

**Children finish at 2.00pm on 20 December 2023, 28 March 2024 and 19 July 2024**

#### Public Holidays:

Monday 25 December 2023:	Christmas Day Holiday
Tuesday 26 December 2023:	Boxing Day Holiday
Monday 1 January 2024:	New Year Holiday
Friday 29 March 2024:	Good Friday
Monday 1 April 2024:	Easter Monday
Monday 6 May 2024:	May Day Bank Holiday
Monday 27 May 2024:	Spring Bank Holiday
Monday 26 August 2024:	Summer Bank Holiday

## Reminders to all Parents and Carers

### Correct School Uniform:

Please ensure your child comes to school in the correct uniform. All children must wear black shoes or plain black trainers, black or grey school trousers or skirts and socks and Hijabs should be plain white, black or grey. Grey or black shorts or purple checked summer dresses can be worn in warm weather.

### Punctuality:

Please ensure your child arrives to school on time every day; arriving late is embarrassing and missed learning time affects achievement and stops your child from reaching his or her potential.

### Parking:

Picton Street is now monitored by Council cameras from 08:30 - 09:15 and 15:00 - 16:00. If you arrive by car please factor this in, as you will need to park elsewhere and walk into Picton Street, or risk a warning/fine.

## Safeguarding Information

The designated team for Safeguarding at Brunswick Park Primary is  
Susannah Bellingham  
Caroline Campion and  
Thomas Moudiotis.

If you have any concerns about any child, please contact us.

We are committed to Safeguarding all children and members of our school community and take all concerns seriously.

For your information, key school policies are available on request from the School Office and can be downloaded from the school Website under the 'Our School' tab.

Please check the website, X (Twitter) and Instagram for further details about what children have been doing and learning in school.

Missed a newsletter? All newsletters are available for download from the School Website under the 'News' tab.

<http://www.brunswickparkprimary.co.uk>

## Attendance Update

If your child needs to be absent from school for exceptional reasons, you need to complete an Exceptional Leave Request Form in good time beforehand, available on the website and from the School Office.

***Remember - don't book holiday in term time - even if the tickets are cheaper - as it cannot be authorised.***

***Children are entitled to 190 days' education per year.***

## Whole School Attendance Target: 96%

### Right to Reply:

**22/09/23: Please email the address below to give us constructive suggestions or comments, including your name and your child's class.**

**Thank you.**

[office@brunswickpark.southwark.sch.uk](mailto:office@brunswickpark.southwark.sch.uk)