

Brunswick Park Primary School

e-Newsletter



Friday 25 November 2022

Tel: 020 7525 9033



Brunswick Park
Primary School

www.brunswickparkprimary.co.uk

November's Focus Value is **RESPONSIBILITY**; December's is **PEACE**

Dear Parents and Carers

As December fast approaches, Brunswick becomes even more of a hive of activity. In this edition of the Newsletter, we look forward to all that December brings, beginning with the Brunswick Park Families Association Winter Fair on Friday 2 December in the Key Stage 2 Playground from 3.30 - 5.00pm. Do please come to support the great work the Association does, and if you can, order your Christmas tree up to 30 November.

At this time of year, Brunswick supports the charity Save the Children through taking part in its annual Christmas Jumper Day. This year is it on Thursday 8 December, and for the first time the school has a JustGiving page for donations. There is a QR code and a weblink to the page below in this letter, and for every £2 Brunswick raises, this year the UK government will double it. (Please be assured that if you make a donation via the JustGiving page it goes straight to Save the Children - my name is in the web address only because it was needed to set up the page!)

For the sake of the planet and our children's futures on it, we cannot support fast fashion, so this year we are celebrating Christmas jumpers that have been worn before and jumpers the children already have, decorated with tinsel, baubles, felt and glitter, or any other way you like. Please don't spend your money on buying anything new, and remember that donations are optional. The children of Brunswick represent all the peoples of the World, not all of whom celebrate Christmas. So, instead of wearing a Christmas jumper, children can come to school on that day in celebration clothes.

On the theme of clothes, I come to uniform, and our children's talent for losing it. If uniform is clearly named, Karen will return it to its owner. However, if it is not named, she can't. Unclaimed unnamed uniform and clothing have been collected and washed ready for sale on Wednesday 14 December at 3.30 - 3.45pm in the Key Stage 2 Playground.

Parents and Carers will be able to purchase the following:

- Purple jumpers and cardigans with school logo
- White shirts
- White polo shirts
- White t-shirts
- Grey trousers
- Grey skirts/dresses
- Coats (various ages)

All money raised will go to the BPFA.

And finally, for the first time, the children of Brunswick Park will stage a Winter Concert for parents and carers on Friday 9 December. Please look out for further details next week.

With best wishes for a peaceful and enjoyable fortnight ahead.

Susannah Bellingham

Head Teacher

TERM DATES ARE ALWAYS ON THE NEWSLETTER AND WEBSITE

SAVE THE CHILDREN CHRISTMAS JUMPER/CELEBRATION CLOTHES DAY THURSDAY 8 DECEMBER

WINTER CONCERT FRIDAY 9 DECEMBER

LOST UNIFORM SALE WEDNESDAY 14 DECEMBER



**BRUNSWICK PARK
FAMILIES ASSOCIATION**

presents the 2022

Winter Fair!

Friday 2nd December
KS2 Playground



**Food • Mulled Wine • Bake Sale
Face Painting • Crafts & Games • Music
Market Stalls • And more!**

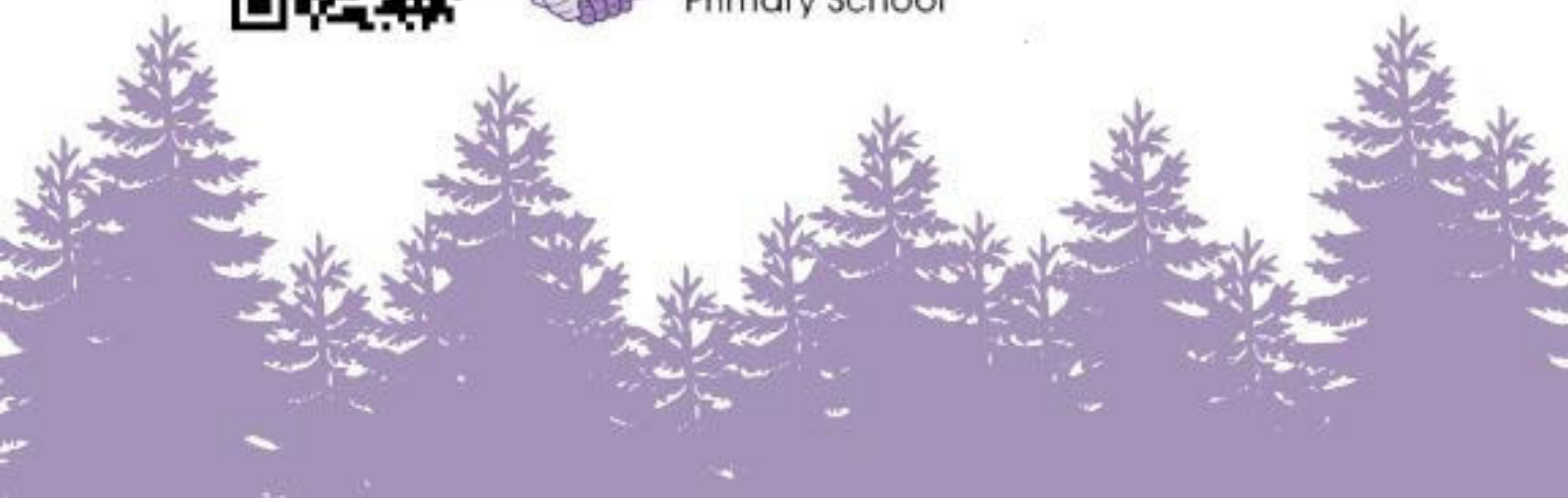
Donate
here



All fundraising benefits the Brunswick Park
Families Association, raising funds in aid of



Brunswick Park
Primary School



Buy your Christmas Tree from the Brunswick Park Families Association

And support our school! £10 from
each tree sold goes to the BPFA.

For an order form, visit the BPFA table
(under the shelter in the KS2
playground) at pick-up/drop-off
between now and 30th November.

Order now!



All fundraising benefits Brunswick Park Families
Association, raising funds in aid of



Brunswick Park
Primary School



Sharing Stories in Years 1 and 2

We're teaching every child to read with Little Wandle Letters and Sounds Revised

A complete SSP validated by the Department for Education



Brunswick Park is a Wandle English Hub Partner School, and our focus this year is teaching all children to read so they can enjoy books and stories, and access the full school curriculum. We have improved our systems and approach to ensure no child is left behind, and to promote a love of reading and reading for pleasure. We checked our progress this week and staff are doing really well: the children are making great progress and they love sharing stories with each other, as you can see. Thanks to all those parents and carers of children in Reception who came into school this week to learn about our approach to teaching reading; it's great to have your support.



THURSDAY 8 DECEMBER

JustGiving



ABOUT FAQs RESOURCES LOG IN



SAVE THE CHILDREN'S

CHRISTMAS JUMPER DAY



BRUNSWICK PARK
PRIMARY SCHOOL -
CHRISTMAS JUMPER
DAY

RAISED
£0

TARGET
£200

ACHIEVEMENTS

SCAN TO DONATE

We've also got our own QR code - simply scan the code with your phone camera and donate directly to our team!

Not sure how it works? Check out our [FAQs!](#)



*When sending a text donation you'll be billed your chosen donation amount, plus your standard network rate. Save the Children receive 100% of your donation. By texting, you agree to calls from Save the Children about fundraising appeals, campaigns, events and other ways to support. Include NO after your team text code and donation amount to opt out of phone calls e.g. SAVE10NO. Queries? 02070126400. Read Save the Children's Privacy Policy: www.savethechildren.org.uk/privacy

The web link to Brunswick Park Primary School Christmas Jumper Day JustGiving page is:
<https://christmas.savethechildren.org.uk/fundraising/susannah-bellingham-christmas-jumper-day>



The children raised £60 for the Anti-Bullying Alliance on Odd Socks Day on Monday 14 November, making a really positive start to this year's Anti-Bullying Week.

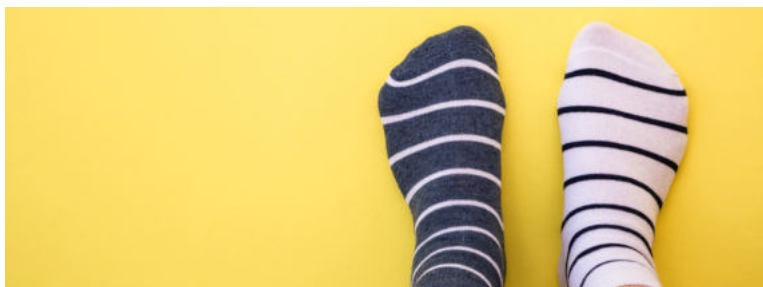
This year's theme is Reach Out, and in assemblies and classroom activities the children learned about the importance of supporting others who they see may be being bullied.

When bullying happens it must be challenged, and children learned the importance of acting together to do this.

No child should feel alone.

<< Bullying is the repetitive, intentional hurting of one person or group by another person or group, where the relationship involves an imbalance of power. It can happen face to face or online. >>

ANTI-BULLYING ALLIANCE
Definition of bullying



Winter Family Activities at the Centre for Wildlife Gardening 28 Marsden Road, SE15 4EE

Have fun on these one day courses for dads, mums and children of any age with the London Wildlife Trust. Southwark residents only. Free but £3 refundable deposit required.

Saturday 10th December 10am till 3pm Evergreens and Wreaths

Get to know your garden evergreens, find out how they are good for wildlife and make a winter wreath and other decorations using natural materials.

Tuesday 20th December 10am till 3pm Winter Wildlife Helpers

Discover what's living in our garden in winter and how you can help. Make a ladybird hotel, a mouse house, food for birds and plant up a pot for bees.



Funded by

Southwark
Council
southwark.gov.uk

To find out more and for booking visit www.wildlondon.org.uk/events or contact Diana.dwallace@wildlondon.org.uk



Masterman House – mural art on the wall?

I am a volunteer with the Camberwell Identity Group*. It's a group of local volunteers who work with schools and residents to improve the town centre (see examples on the other side of this letter).

The 2021 Olympic Silver medallist for BMX biking Kye Whyte used to live in Masterman House. Someone now living in Masterman House suggested we could celebrate his victory and sport as a mural painting on the brick wall facing New Church Road. The Housing Office has agreed. We want to know what you think.



Over the next few months, we will:

- Ask local residents if they would like to see a mural painted on the wall in the photo above
- Work with local residents to share ideas (including the BMX hero theme) for the painting
- Set up a competition to find the best artist to paint the mural for this wall
- Invite some local people to help select the best artist
- Help the artist work with the local community

We are working on dates and times for all this.

Please contact me on camberwellmurals@gmail.com and let me know if you would you like to see a mural on this wall? And also, if you would like to be part of any of this mural project as it progresses.

Yours faithfully

Deborah Allen

Debbie Allen
Volunteer with the Camberwell Identity Group



Data Protection

Your contact details will only be saved as part of the Masterman House mural project. At the end of the project, we will remind you that your contact details will be removed from our records. If you are still interested in the work of the Camberwell Identity Group you can ask to be transferred to a different database to keep in touch.



*The Camberwell Identity Group is a group of local residents, businesses, artists, designers and community organisations. We work together to improve Camberwell.

The group is led by the SE5 Forum, Camberwell Society and Camberwell Arts. We raised money for *Camberwell Banners* along Denmark Hill. We have organised a few murals including ones on Camberwell New Road, Wyndham Road and Peckham Road. We commissioned the sculpture on the Windsor Walk side of Denmark Hill Station. The pictures below show some things we have done that you may have seen.



Camberwell New Road mural



Street Banners example



Map of Camberwell



Lumberjack shutters, Camberwell Church St



Peckham Road mural



Caffe Vape shutters, Coldharbour Lane





Making payments for goods and services at school

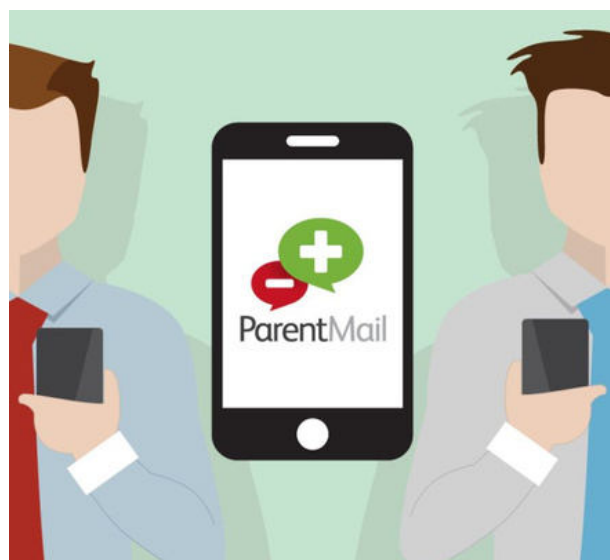
Payments for uniform, trips, Breakfast Club, top-up fees and Nursery After School Club can all be made either in cash at the School Office, or online, via ParentMail.

To pay for uniform online using ParentMail, you need to log in to your account and pay for the item/s **before** you collect them from the School on Wednesdays.

To pay for all other services – trips, Breakfast Club, top-up fees and Nursery After School Club – make sure your ParentMail account is registered to pay for the services you need, then you can pay for them online.

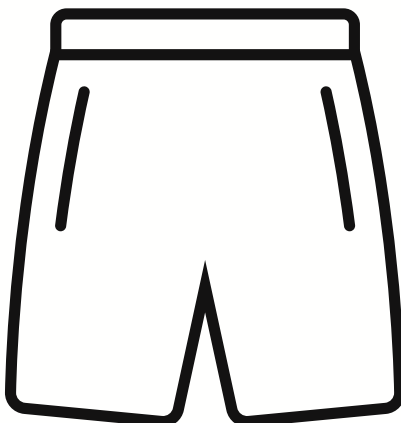
If you need support to register, please see the School Office Staff.

WE HOPE THIS HELPS!



School Uniform on PE Days

In the survey you told us you like the school uniform. If we have one, the children need to wear it. Children in Years 1-6 come to school in their PE kit on the day they have PE:



PE DAYS:

Tuesday:

Year 1
Year 2
Year 4
Year 5

Wednesday:

Year 6

Thursday:

Year 3
Resource Base

Friday:

Nursery
Reception

(Children in Nursery and Reception do not wear PE kit)

PE Kit:

White T-shirt or White polo shirt
Black shorts, leggings
or jogging bottoms
White socks

Black plimsolls or trainers
School jumper or cardigan

Children should not wear football boots of any kind for health and safety reasons, or coloured trainers.

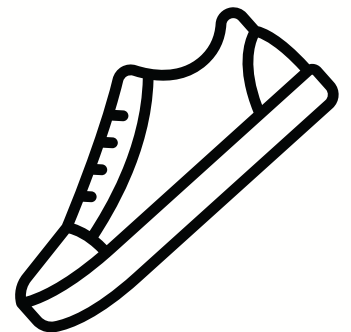
We will write to you if your child does not wear school PE kit; if you need support to provide it, please let School Office staff know.



or

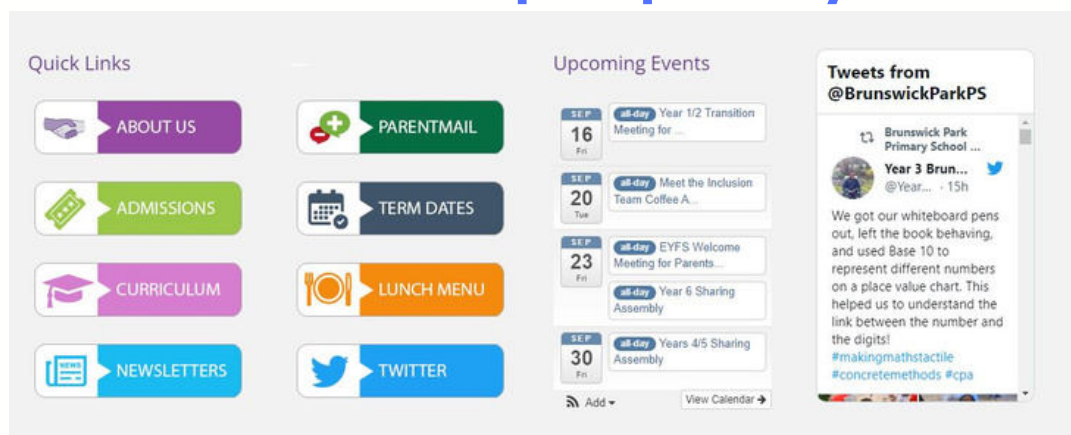


or



with





On the Homepage of Brunswick's website there is the Events Diary, our Twitter Feed and Quick Links to all the information you need. Please use it to stay up to date; it is there to help you.

School Tours for New Parents/Carers

We are pleased to announce a series of Open Mornings now available where we will be happy to greet parents from 10am on the following dates:

- **Friday 9 December 2022**
- **Friday 6 January 2023**
- **Friday 13 January 2023**

If you would like to book one of the above open mornings, please contact us on 020 7525 9033 to book your slot.

We look forward to meeting you, and showing you around the school.

Uniform

Sweatshirts, cardigans, bookbags and swimming hats are available to buy or collect from the School Office on **Wednesdays from 3.30-4.00pm**. If you choose to pay in cash, please bring the right money as we cannot give change. If you choose to pay online via ParentMail, please pay for your item/s before coming to collect them.

Age 13 - adult sweatshirts = £10.00

All other sweatshirts = £8.00

Age 13 - adult cardigans = £13.00

All other cardigans = £11.00

Book Bags = £4.00

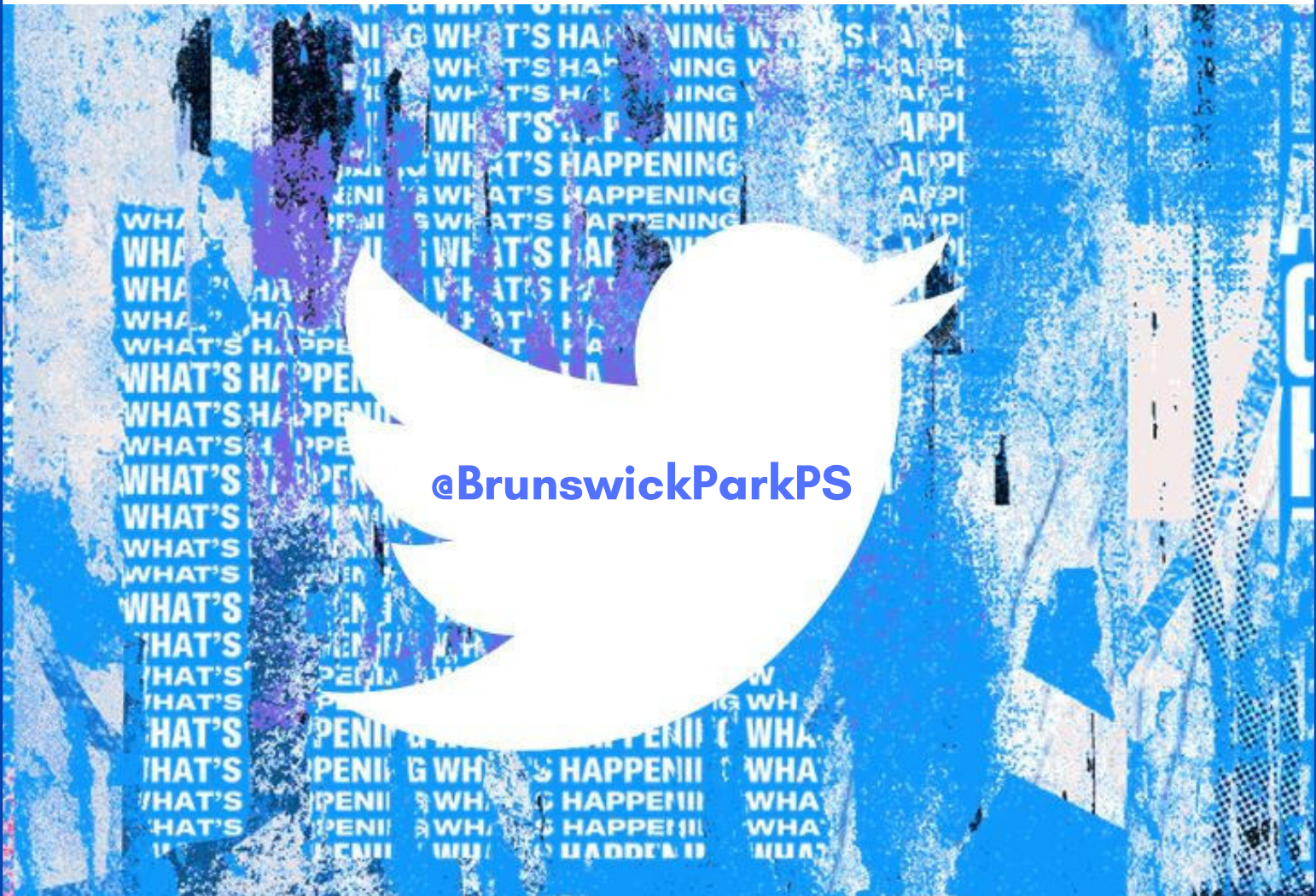
Swimming Hats = £1.00

Clothing with the old shoulder logo is available at the reduced price of £5.50



Follow us on Twitter

Classes and Year Groups Tweet regularly throughout the week to keep parents and carers up to date with what the children are learning and doing. Here are this year's Twitter usernames:



Inclusion Team
@InclusionBPPS



EYFS
@EyfsBPPS



Years 1 and 2
@Years1and2BPPS



Year 3
@Year3BPPS



Years 4 and 5
@Years4and5BPPS



Year 6
@Year6BPPS



The Play Shelter After School Club @ Brunswick Park

£55 per week

£20 per day

3.30 - 6.00pm Monday - Friday

To register your child, contact the Centre Manager on **07905 007964**
or visit the After School Club in the Dining Hall.

email: admin@theplayshelter.co.uk

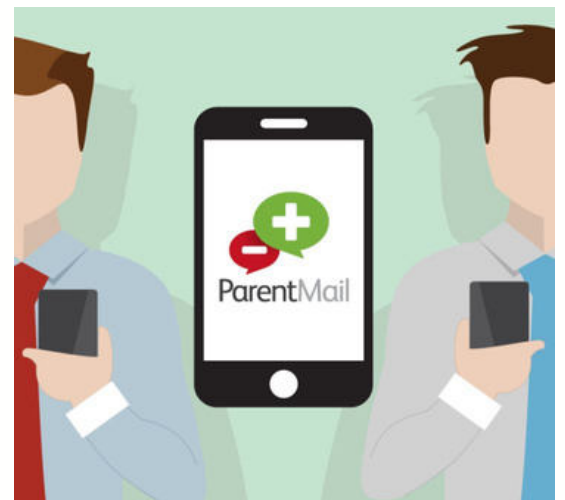
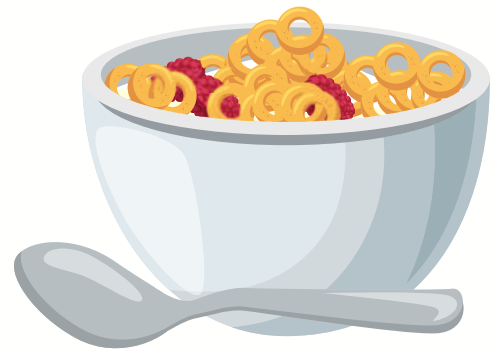
website: www.theplayshelter.co.uk

Brunswick Park Breakfast Club

Reception - Year 6

£12 per week

regardless of the number of days children attend,
payable a week in advance at the School Office
and online via ParentMail.



7.45am until the start of the school day, Monday - Friday

In the Dining Hall, run by Brunswick's own staff: Mikaela, Linda and Karen
Nursery Breakfast Club details are on the next page



Nursery Admissions

OPEN

September 2022

Brunswick Park Primary School offers:

15 hours childcare

Free

30 hours childcare

Free (subject to eligibility)

Breakfast Club from 7:45am

£16 per week

After School Club until 6:00pm

£50 per week

We ensure a safe, nurturing, home from home environment where children's needs and interests inspire planning to extend learning. Children make use of a range of indoor and outdoor spaces with the best resources which allow children to maximise their learning experience. All of our staff members are carefully selected. We foster a culture where staff are warm and caring to ensure supportive relationships with children and families.

**To book a visit or reserve a place please contact the office
or scan the QR code:**



020 7525 9033

office@brunswickpark.southwark.sch.uk

SCAN ME

Term Dates 2022/2023

ACADEMIC YEAR 2022-2023

Autumn Term

HALF TERM 1: Thursday 1 September 2022 to Friday 21 October 2022

**INSET DAYS ON THURSDAY 1 SEPTEMBER AND FRIDAY 2 SEPTEMBER -
CHILDREN RETURN ON MONDAY 5 SEPTEMBER**

HALF TERM BREAK: Monday 24 October 2022 to Friday 28 October 2022

HALF TERM 2: Monday 31 October 2022 to Friday 16 December 2022

INSET DAY MONDAY 31 OCTOBER - CHILDREN RETURN ON TUESDAY 1 NOVEMBER

Spring Term

HALF TERM 3: Tuesday 3 January 2023 to Friday 10 February 2023

INSET DAY ON TUESDAY 3 JANUARY - CHILDREN RETURN ON WEDNESDAY 4 JANUARY

HALF TERM BREAK: Monday 13 February 2023 to Friday 17 February 2023

HALF TERM 4: Monday 20 February 2023 to Friday 31 March 2023

Summer Term

HALF TERM 5: Monday 17 April 2023 to Friday 26 May 2023

(May Day bank holiday will be taken on 1 May)

HALF TERM BREAK: Monday 29 May 2023 to Friday 2 June 2023

HALF TERM 6: Monday 5 June 2023 to Friday 21 July 2023

INSET DAY MONDAY 5 JUNE - CHILDREN RETURN ON TUESDAY 6 JUNE

Children finish at 2.00pm on 16 December 2022, 31 March 2023 and 21 July 2023

Reminders to all Parents and Carers

Correct School Uniform:

Please ensure your child comes to school in the correct uniform. All children must wear black shoes or plain black trainers, black or grey school trousers or skirts and socks and Hijabs should be plain white, black or grey. Grey or black shorts or purple checked summer dresses can be worn in warm weather.

Punctuality:

Please ensure your child arrives to school on time every day; arriving late is embarrassing and missed learning time affects achievement and stops your child from reaching his or her potential.

Parking:

Picton Street is now closed to traffic from 08:30 - 09:15 and 15:00 - 16:00. If you arrive by car please factor this in, as you will need to park elsewhere and walk into Picton Street.

Safeguarding Information

The designated team for Safeguarding at Brunswick Park Primary is
Susannah Bellingham
Caroline Champion and
Thomas Moudiotis.

If you have any concerns about any child, please contact us.

We are committed to Safeguarding all children and members of our school community and take all concerns seriously.

For your information, key school policies are available on request from the School Office and can be downloaded from the school Website under the 'Our School' tab.

Please check the website and Twitter for further details about what children have been doing and learning in school.

Missed a newsletter? All newsletters are available for download from the School Website under the 'News' tab.

<http://www.brunswickparkprimary.co.uk>

Attendance Update

Highest attendance of the fortnight is Class 6A with 100%, and Reception with 99+%

Lowest attendance of the fortnight is Class 3A

Class with the most lateness is Class Reception B

Whole school attendance of the fortnight is 94%

If your child needs to be absent from school for exceptional reasons, you need to complete an Exceptional Leave Request Form in good time beforehand, available on the website and from the School Office.

Remember - don't book holiday in term time - even if the tickets are cheaper - as it cannot be authorised.

Whole School Attendance Target: 97%

Right to Reply:

25/11/22: Please email the address below to give us constructive suggestions or comments, including your name and your child's class.

Thank you.

office@brunswickpark.southwark.sch.uk