

Brunswick Park Primary School

e-Newsletter

 @BrunswickParkPS

Monday 17 October 2022

Tel: 020 7525 9033



Brunswick Park
Primary School

www.brunswickparkprimary.co.uk

October's Focus Value is **EMPATHY**

Dear Parents and Carers

Our first Half Term comes to an end this coming Friday, 21 October. The school day ends at the usual time of 3.30pm, then the children have a week off school. Monday 31 October is a Staff Training (INSET) Day, so children return to school on Tuesday 1 November. In this Newsletter there are details of some family activities for Half Term week, so I am sending it out today so there is enough time to plan for them.

As we build up to our first Break, I want to thank everyone in the school community for their work and contributions to making the first Half Term of this academic year successful. It has been a pleasure to welcome so many parents and carers for sharing assemblies and workshops, and to work with your support as we introduce Little Wandle Letters and Sounds Revised to teach phonics and reading. The children are already making better progress. The staff have been amazingly positive and hardworking whilst new systems are established, and the children have responded with enthusiasm in their learning, doing some great work to a very high standard. And thanks to everyone who returned sponsorship money from our Athlete Event with Fred Afrifa. It will go today to Sports for Schools, who will send the wristbands and posters as soon as they can.

Friday marks the end of our Black History topic, when the children will share their learning with each other, on the theme, 'Time for Change: Action, Not Words', inspired by the texts *Black and British, a Short Essential History* by David Olusoga, and *Africa, Amazing Africa*, by Atinuke. On Tuesday - tomorrow - our caterers, ISS, are providing the children with a special lunch menu of Jamaican Beef Patty, Macaroni Cheese, Cajun Potato Wedges, Honey Carrots and Sweetcorn, followed by Banana Cake.

Friday also marks our Specialist Music Teacher Paula Hales's last day working with us at Brunswick Park after six years at the school. It has been a joy to work with a teacher and colleague so kind, knowledgeable and child-centred, and I am sure you will join me in wishing her all the very best as she leaves London for Leeds to be nearer family. We welcome Thomas Dowling as our new Specialist Music Teacher, who has already made a great start.

Finally, the brilliant BPFa is holding a Bake Sale in Bantry Street on Thursday. See you there!

With best wishes for a peaceful and enjoyable Half Term Break and fortnight ahead.

Susannah Bellingham

Head Teacher

AUTHOR VISIT AND BPFs BAKE SALE 20 OCTOBER

HALF TERM BREAK 24-31 OCTOBER

PLEASE COMPLETE OUR PARENT/CARER SURVEY THIS WEEK

TERM DATES ARE ALWAYS ON THE NEWSLETTER AND WEBSITE



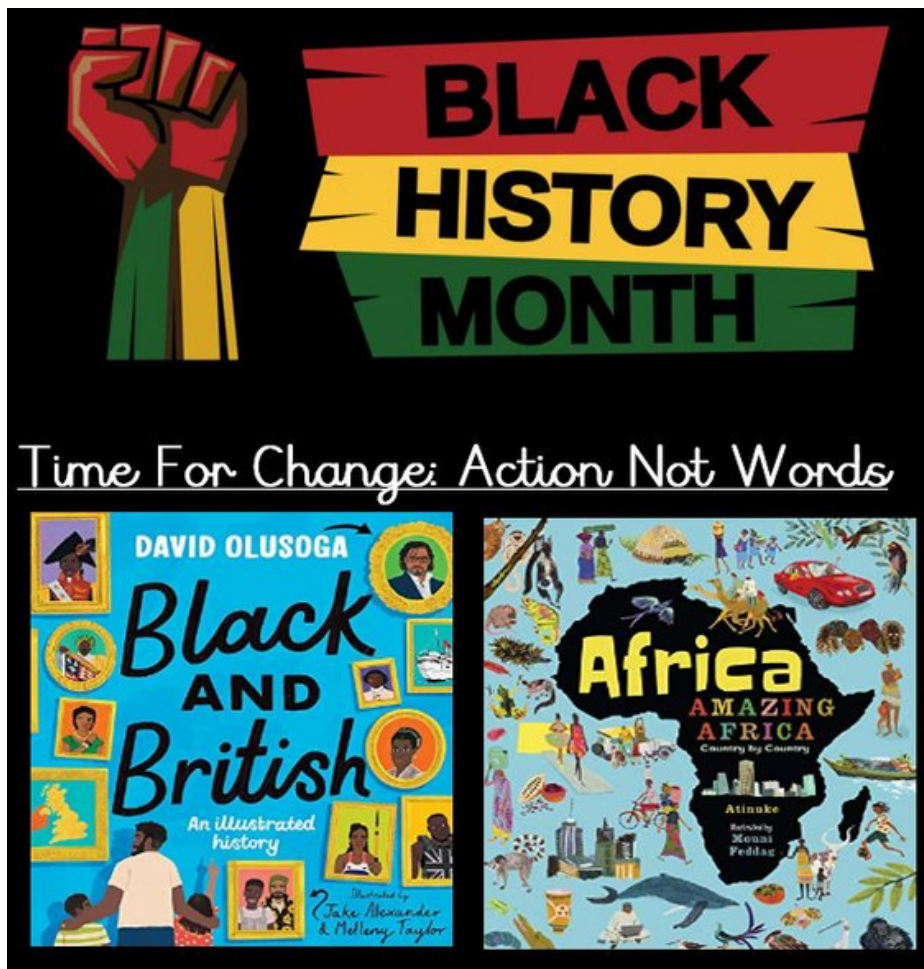
Time for Change: Action, not Words

This is the final week of our Black History Month celebrations.

We are using two whole-school texts, *Black and British* by David Olusoga and *Africa, Amazing Africa* by Atinuke.

Each Year Group is learning about the contribution to British history made by Black people; from the Romans to the Windrush when they read *Black and British*. Each class is learning about a country in Africa when they read *Africa, Amazing Africa*. The children will share their work with each other on Friday in special assemblies, which focus on History, Geography and Art.

Watch out for Tweets!



Author Visit 20 October

A reminder that author Banji Alexander is visiting Brunswick on Thursday 20 October to read and discuss his book 'Lockdown Looms: Reggie's Birthday Party'. If you would like to buy a copy of the book, it is available via the school at the reduced price of £10 (usually £12.99). To pre-order one, please pay £10 in an envelope labelled with your child's name and class to the School Office. Banji will sign copies of the book during his visit.





On Monday 10 October a group of Brunswick's Year 3 pupils travelled to Geraldine Mary Harmsworth Park to take part in a football tournament.

We entered two teams, one of which made the semi-finals before unfortunately losing to Goodrich. The other team recorded two losses and a win against Comber Grove at the group stage.

There were fantastic individual performances, especially from the girls (Daniella, Isabella, Rhoda and Mariam) as they were nervous beforehand but showed great determination to get stuck in and be fully involved in the matches.

We were very proud of the team effort from everyone and the support from the parents who came along to watch.

Well done!



**The next Brunswick Park Families Association
(BPFA) Bake Sale will be on:**

**Thursday 20 October at 3.15pm
Bantry Street**

**Delicious treats homemade by our school
community!**

All proceeds go to the BPFA, which raises funds to support the school.



October Half-Term
Tues 25th
Wed 26th

FUN ACTIVITIES SUCH AS:

- Art & Craft
- Music
- Drama
- Fitness
- Story Telling
- Board Games
- Cooking

**OUR ACTIVITIES ARE
ONLINE AND IN PERSON**



OUR CENTERS

ST GEORGE'S COFE PRIMARY SCHOOL
Coleman Rd, SE5 7TF

ST GILES
St Giles Parish Hall,
161 Benhill Road. SE5 7LL

**SPECIAL NEEDS & DISABILITIES (SEND)
PROGRAMME**
Camberwell College of Arts Foundation -
Modular Building, 1 Wilson Rd, SE5 8LU

TEENS CENTRE @ UNITED REFORMED CHURCH
Love Walk, Camberwell, SE5 8AE **26th & 27th**

THE CLUB ROOM
Samuel Lewis Trust Estate,
Warner Road, SE5 9NE

AMOTT ROAD BAPTIST CHURCH
Amott Road, SE15 4HU

ST PAUL'S CHURCH HALL
Lorrimore Square,
Lorrimore Rd, SE17 3QU

DAWSON HEIGHTS ESTATE
Community Centre
Overhill Road, SE22 0PW

**FREE FOR
AGES 0-16**



Funded By

Impact
on **Urban**
Health



Book your place today!
holidayclub@springcommunityhub.org.uk
WhatsApp/call/text
07988138997

Saturday 22nd October, 12pm-3pm

Dulwich Orchard, corner of Gallery Road and Burbage Road, SE21 7AE



Free event, but donations are welcome. All profits are invested into London Wildlife Trust's conservation and education work, and the care of its nature reserves.

All children must be accompanied by an adult at all times to participate in the activities.



Further information at wildlondon.org.uk/events/2022-10-22-apple-day-dulwich-orchard or contact Abi on amarch@wildlondon.org.uk

Registered charity no. 283895

Supported by



THE *Dubwich*
ESTATE

Autumn Half Term Family Activities

At the Centre for Wildlife Gardening 28 Marsden Road SE15 4EE

With the London Wildlife Trust

Free. £3 refundable deposit required.

Monday 24th & Tuesday 25th October

Bushcraft 10am till 3pm

A fun two days learning how to survive in our wildlife garden with shelter building, fire lighting, water filtering and foraging. A two day course with games, stories and activities suitable for families with children of any age but particularly aimed at 5-11s who are Southwark residents.

Thursday 27th October

Lovely Leaves 10am till 3pm

Have fun with leaf art, games and trails on this day course discovering trees and their leaves for dads, mums and children of any age. Southwark residents only.



Funded by



To find out more and for booking visit www.wildlondon.org.uk/events or contact Diana dwallace@wildlondon.org.uk



GET RID OF AND
—DONATE—

OPEN HOUSE

FREE CLOTHING, HOUSEHOLD,
TOYS & BOOKS

Come and choose what you need.
All items are FREE

WHEN?

Starting Monday 17th October
Open House - Coffee Morning at 10:00 - 11:30
No items will be available outside of
these times or on other days

WHERE?

St. Faith's Community Centre
Red Post Hill, Dulwich
London SE24 9JQ

Train: North Dulwich Station

Bus: 37 or P4

CONTACT US

07944 102 112

WWW.GETRIDOFIT-DONATE.COM





On the Homepage of Brunswick's website there is the Events Diary, our Twitter Feed and Quick Links to all the information you need.

Please use it to stay up to date; it is there to help you.

School Tours for New Parents/Carers

We are pleased to announce a series of Open Mornings now available where we will be happy to greet parents from 10am on the following dates:

- **Friday 21 October 2022**
- **Friday 11 November 2022**
- **Friday 25 November 2022**
- **Friday 9 December 2022**
- **Friday 6 January 2023**
- **Friday 13 January 2023**

If you would like to book one of the above open mornings, please contact us on 020 7525 9033 to book your slot.

We look forward to meeting you, and showing you around the school.

Uniform

Sweatshirts, cardigans, bookbags and swimming hats are available to buy from the School Office on **Wednesdays from 3.30-4.00pm**. It's cash only at the moment; please bring the right money as we cannot give change.

Age 13 - adult sweatshirts = £10.00

All other sweatshirts = £8.00

Age 13 - adult cardigans = £13.00

All other cardigans = £11.00

Book Bags = £4.00

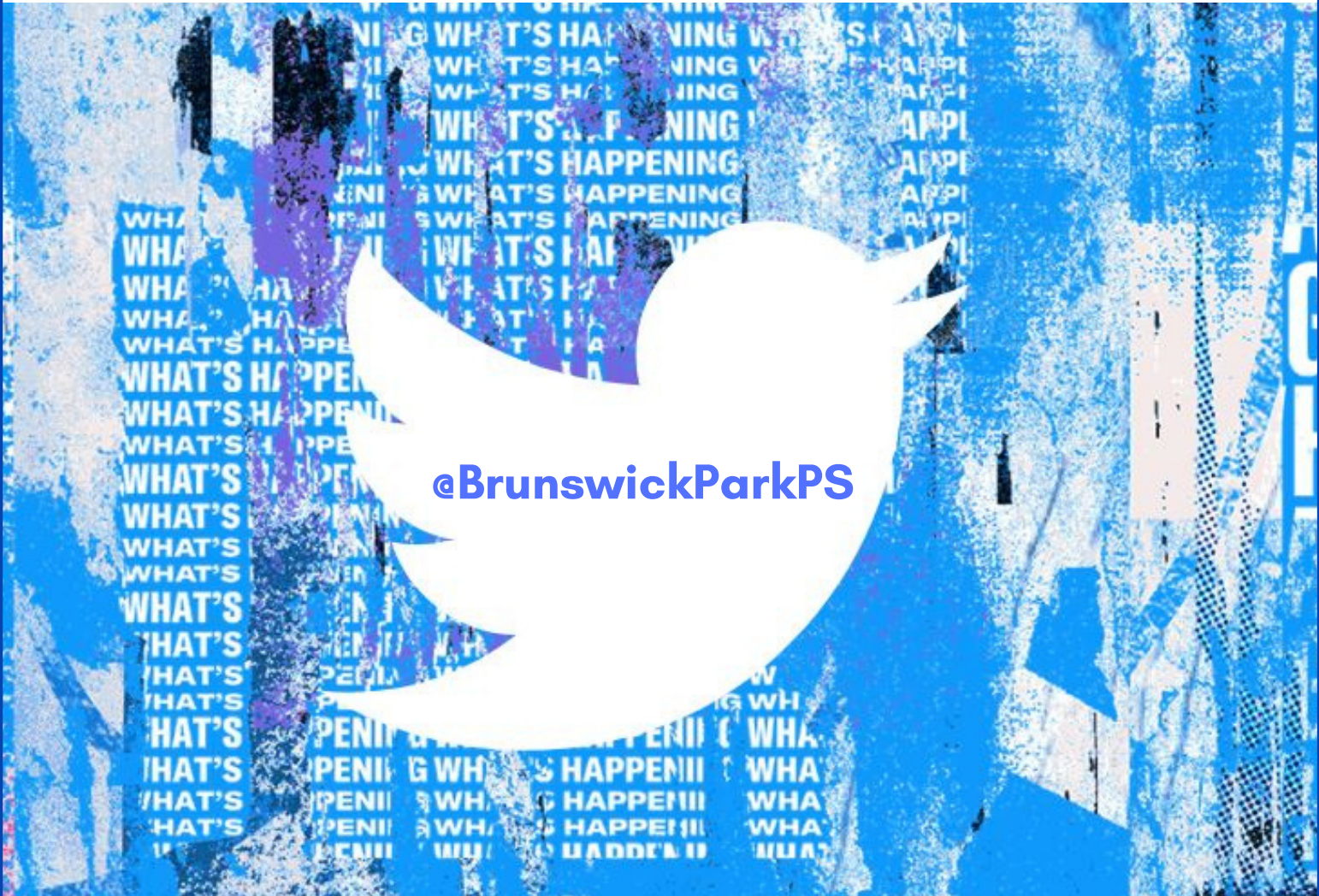
Swimming Hats = £1.00

Clothing with the old shoulder logo is available at the reduced price of £5.50



Follow us on Twitter

Classes and Year Groups Tweet regularly throughout the week to keep parents and carers up to date with what the children are learning and doing. Here are this year's Twitter usernames:



[@BrunswickParkPS](https://twitter.com/BrunswickParkPS)



Inclusion Team
[@InclusionBPPS](https://twitter.com/InclusionBPPS)



EYFS
[@EyfsBPPS](https://twitter.com/EyfsBPPS)



Years 1 and 2
[@Years1and2BPPS](https://twitter.com/Years1and2BPPS)



Year 3
[@Year3BPPS](https://twitter.com/Year3BPPS)



Years 4 and 5
[@Years4and5BPPS](https://twitter.com/Years4and5BPPS)



Year 6
[@Year6BPPS](https://twitter.com/Year6BPPS)



The Play Shelter After School Club @ Brunswick Park

£55 per week

£20 per day

3.30 - 6.00pm Monday - Friday

To register your child, contact the Centre Manager on **07905 007964**
or visit the After School Club in the Dining Hall.

email: admin@theplayselter.co.uk

website: www.theplayselter.co.uk

Brunswick Park Breakfast Club

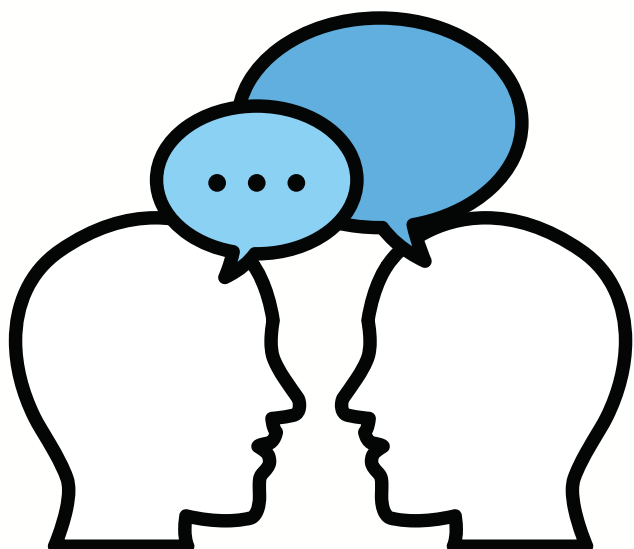
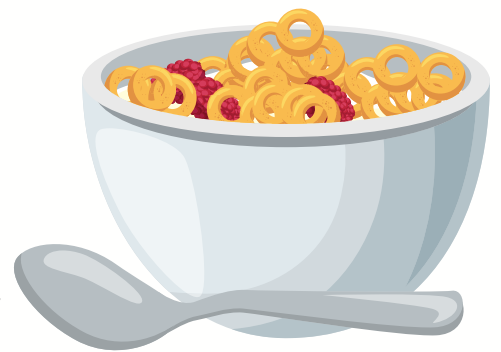
Reception - Year 6

£12 per week

regardless of the number of days children attend,
payable a week in advance at the School Office

7.45am until the start of the school day, Monday - Friday

In the Dining Hall, run by Brunswick's own staff: Mikaela, Linda and Karen
Nursery Breakfast Club details are on the next page



We need you!

To keep improving, we need to know what you think.

Please help us to help your children by completing our first Parent/Carer Survey this week: a link to the survey will be sent to you by email.

THANK YOU!



Nursery Admissions

OPEN

September 2022

Brunswick Park Primary School offers:

15 hours childcare

Free

30 hours childcare

Free (subject to eligibility)

Breakfast Club from 7:45am

£16 per week

After School Club until 6:00pm

£50 per week

We ensure a safe, nurturing, home from home environment where children's needs and interests inspire planning to extend learning. Children make use of a range of indoor and outdoor spaces with the best resources which allow children to maximise their learning experience. All of our staff members are carefully selected. We foster a culture where staff are warm and caring to ensure supportive relationships with children and families.

To book a visit or reserve a place please contact the office

or scan the QR code:



020 7525 9033

office@brunswickpark.southwark.sch.uk

SCAN ME

Term Dates 2022/2023

ACADEMIC YEAR 2022-2023

Autumn Term

HALF TERM 1: Thursday 1 September 2022 to Friday 21 October 2022

**INSET DAYS ON THURSDAY 1 SEPTEMBER AND FRIDAY 2 SEPTEMBER -
CHILDREN RETURN ON MONDAY 5 SEPTEMBER**

HALF TERM BREAK: Monday 24 October 2022 to Friday 28 October 2022

HALF TERM 2: Monday 31 October 2022 to Friday 16 December 2022

INSET DAY MONDAY 31 OCTOBER - CHILDREN RETURN ON TUESDAY 1 NOVEMBER

Spring Term

HALF TERM 3: Tuesday 3 January 2023 to Friday 10 February 2023

INSET DAY ON TUESDAY 3 JANUARY - CHILDREN RETURN ON WEDNESDAY 4 JANUARY

HALF TERM BREAK: Monday 13 February 2023 to Friday 17 February 2023

HALF TERM 4: Monday 20 February 2023 to Friday 31 March 2023

Summer Term

HALF TERM 5: Monday 17 April 2023 to Friday 26 May 2023

(May Day bank holiday will be taken on 1 May)

HALF TERM BREAK: Monday 29 May 2023 to Friday 2 June 2023

HALF TERM 6: Monday 5 June 2023 to Friday 21 July 2023

INSET DAY MONDAY 5 JUNE - CHILDREN RETURN ON TUESDAY 6 JUNE

Children finish at 2.00pm on 16 December 2022, 31 March 2023 and 21 July 2023

Reminders to all Parents and Carers

Correct School Uniform:

Please ensure your child comes to school in the correct uniform. All children must wear black shoes or plain black trainers, black or grey school trousers or skirts and socks and Hijabs should be plain white, black or grey. Grey or black shorts or purple checked summer dresses can be worn in warm weather.

Punctuality:

Please ensure your child arrives to school on time every day; arriving late is embarrassing and missed learning time affects achievement and stops your child from reaching his or her potential.

Parking:

Picton Street is now closed to traffic from 08:30 - 09:15 and 15:00 - 16:00. If you arrive by car please factor this in, as you will need to park elsewhere and walk into Picton Street.

Safeguarding Information

The designated team for Safeguarding at Brunswick Park Primary is
Susannah Bellingham
Caroline Champion and
Thomas Moudiotis.

If you have any concerns about any child, please contact us.

We are committed to Safeguarding all children and members of our school community and take all concerns seriously.

For your information, key school policies are available on request from the School Office and can be downloaded from the school Website under the 'Our School' tab.

Please check the website and Twitter for further details about what children have been doing and learning in school.

Missed a newsletter? All newsletters are available for download from the School Website under the 'News' tab.

<http://www.brunswickparkprimary.co.uk>

Attendance Update

Highest attendance of the fortnight is Class 4/5A

Lowest attendance of the fortnight is Class 3A and Class 1/2C

Class with the most lateness is Class 4/5A

Whole school attendance of the fortnight is 94%

If your child needs to be absent from school for exceptional reasons, you need to complete an Exceptional Leave Request Form in good time beforehand, available on the website and from the School Office.

Remember - don't book holiday in term time - even if the tickets are cheaper - as it cannot be authorised.

Whole School Attendance Target: 97%

Right to Reply:

17/10/22: Please email the address below to give us constructive suggestions or comments, including your name and your child's class.

Thank you.

office@brunswickpark.southwark.sch.uk