

Brunswick Park Primary School

e-Newsletter



Friday 16 September 2022

Tel: 020 7525 9033



Brunswick Park
Primary School

www.brunswickparkprimary.co.uk

September's Focus Value is **RESPECT**

Dear Parents and Carers

A warm welcome to the first Newsletter of the new academic year, to our new Nursery and Reception children and to all children and families returning after the Summer Break, the first for some time during which many children have been away on holiday. Children are talking to us about seeing relatives in Nigeria, Jamaica, Bangladesh and many other far flung places, often meeting them for the first time ever or the first time in more than 3 years. And, by contrast, some children have gone abroad to say formal goodbyes to grannies and grandpas whom they lost during the pandemic when they were not allowed to travel, which makes it all the more poignant that the whole country is now currently remembering Queen Elizabeth.

The experience of grief and loss is like an explosion of glitter in a living room. First it gets everywhere and covers everything, all the furniture and carpets and down absolutely every nook and cranny, but over time it gets cleaned up and wiped down and it looks like it's gone. But then something happens, like the death of Queen Elizabeth II, that moves a sofa cushion to uncover a pile of glitter missed in the clean-up, reminding us of our own grief and loss all over again, and of how sad it made us. The Queen didn't know us and we didn't know her, but her death is currently jogging personal memories of loss and grief, and children feel the effects of these and the resulting differences in adult behaviour. This too shall pass, but until it does, we continue to support children settling in to school whatever their Year Group, and keep school routines steady and predictable, and I thank all the school's staff for returning after the Break with such commitment to making children feel comfortable, valued, happy and safe at school.

In this Newsletter there is information about Twitter, a visit from a GB athlete, sponsorship, the school's website, surveys and wraparound care, and the school's priorities for development this year, which are:

1. Ensuring all children can read well enough to access the curriculum at secondary school;
2. Improving progress and attainment in mathematics post-pandemic;
3. Creating a specific curriculum for children with complex SEND;
4. Enabling children to understand and manage their emotions and behaviour through modelling and teaching self-regulation.

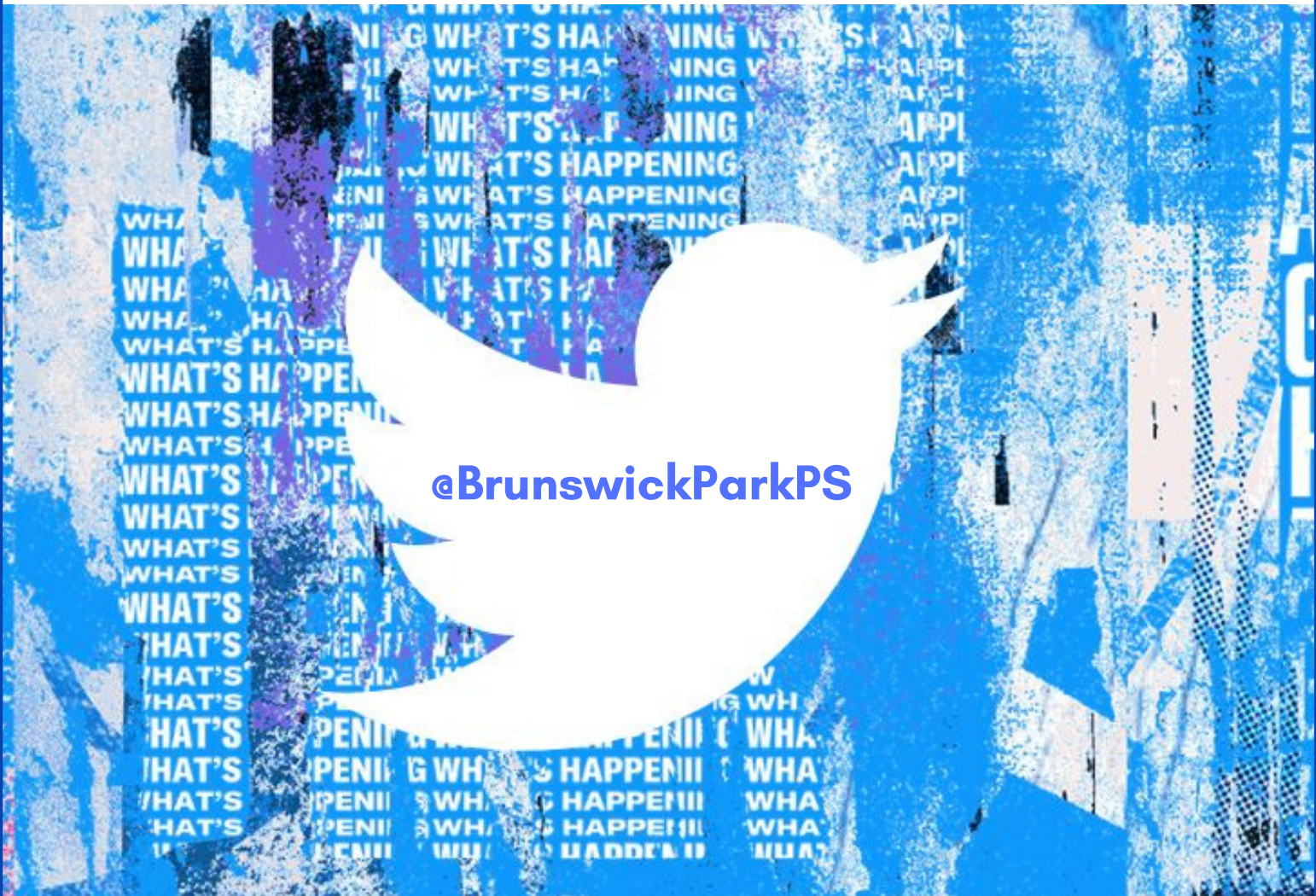
But most importantly right now, because of the Queen's State Funeral **there is no school on Monday 19 September**. I look forward to seeing you and your children again on Tuesday after the long weekend. With best wishes for a peaceful and enjoyable fortnight ahead.

Susannah Bellingham
Head Teacher



Follow us on Twitter

Classes and Year Groups Tweet regularly throughout the week to keep parents and carers up to date with what the children are learning and doing. Here are this year's Twitter usernames:



Inclusion Team
@InclusionBPPS



EYFS
@EyfsBPPS



Years 1 and 2
@Years1and2BPPS



Year 3
@Year3BPPS



Years 4 and 5
@Years4and5BPPS



Year 6
@Year6BPPS



GB ATHLETE VISIT: INSPIRING CHILDREN TO BE ACTIVE THURSDAY 6 OCTOBER

Through Sports for Schools, we have arranged for a GB Athlete to visit the children of Brunswick Park.

**Our top GB athlete is
Frederick Afrifa.**

Frederick is an International Sprinter and is a two time national gold medallist. He was London Schools Champion in 2011, World Youth Relay Champion in 2013, Surrey County Champion 2015 and National Champion 2018. His dream is to one day represent his country at the Olympics.

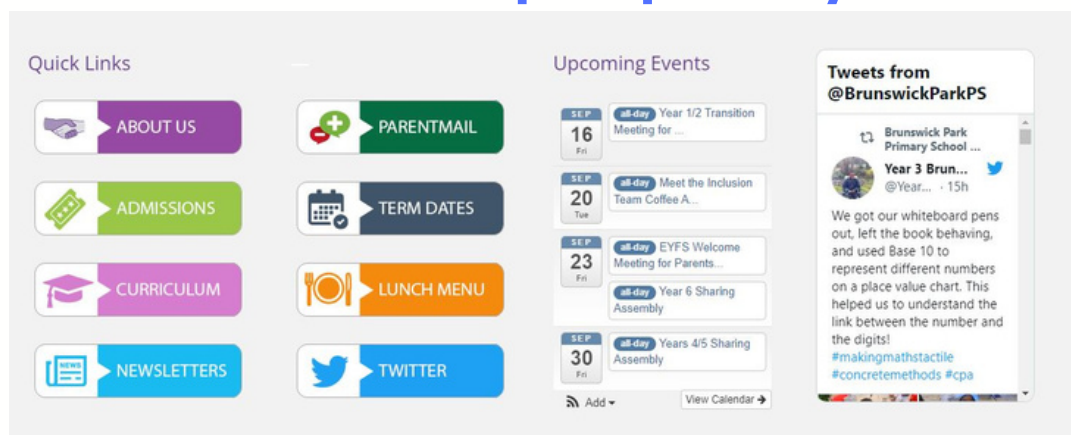
Frederick will run sponsored circuits for children in Years R-6, and hold an assembly about the importance of physical activity to learning and memory.

Money raised from the sponsored circuits will be used to buy equipment for the children to use at play and lunch times to increase their physical activity.

**The event will be introduced to children on
Thursday 22 September.**

They will come home that day with a sponsorship form and details of how to set up an online fundraiser page, and will then have 2 weeks to raise funds before Frederick comes in to inspire them. It's going to be great fun, and of lasting benefit to the children.

Please give all the support you can!



On the Homepage of Brunswick's website there is the Events Diary, our Twitter Feed and Quick Links to all the information you need.

Please use it to stay up to date; it is there to help you.

School Tours for New Parents/Carers

We are pleased to announce a series of Open Mornings now available where we will be happy to greet parents from 10am on the following dates:

- **Friday 16 September 2022**
- **Friday 30 September 2022**
- **Friday 14 October 2022**
- **Friday 21 October 2022**
- **Friday 11 November 2022**
- **Friday 25 November 2022**
- **Friday 9 December 2022**
- **Friday 6 January 2023**
- **Friday 13 January 2023**

If you would like to book one of the above open mornings, please contact us on 020 7525 9033 to book your slot.

We look forward to meeting you, and showing you around the school.

Uniform

Sweatshirts, cardigans, bookbags and swimming hats are available to buy from the School Office on Wednesdays from 3.30-4.00pm. It's cash only at the moment; please bring the right money as we cannot give change.

Age 13 - adult sweatshirts = £10.00

All other sweatshirts = £8.00

Age 13 - adult cardigans = £13.00

All other cardigans = £11.00

Book Bags = £4.00

Swimming Hats = £1.00

Clothing with the old shoulder logo is available at the reduced price of £5.50





The Play Shelter After School Club @ Brunswick Park

£55 per week

£20 per day

3.30 - 6.00pm Monday - Friday

To register your child, contact the Centre Manager on **07905 007964**
or visit the After School Club in the Dining Hall.

email: admin@theplayselter.co.uk

website: www.theplayselter.co.uk

Brunswick Park Breakfast Club

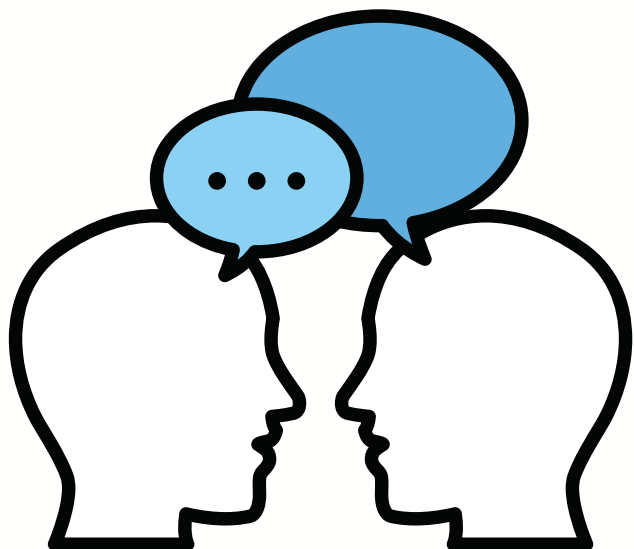
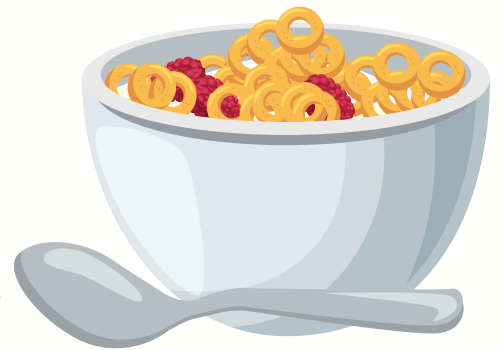
Reception - Year 6

£12 per week

regardless of the number of days children attend,
payable a week in advance at the School Office

7.45am until the start of the school day, Monday - Friday

In the Dining Hall, run by Brunswick's own staff: Mikaela, Linda and Karen
Nursery Breakfast Club details are on the next page



We need you!

To keep improving, we need to know what you think. We will send you Parent/Carer surveys termly, and are very grateful for all constructive feedback that can be used to help us make our provision for the children even better. The first is will be sent the week before Half Term.



Brunswick Park Primary School

Nursery Admissions

OPEN

September 2022

Brunswick Park Primary School offers:

15 hours childcare

Free

30 hours childcare

Free (subject to eligibility)

Breakfast Club from 7:45am

£16 per week

After School Club until 6:00pm

£50 per week

We ensure a safe, nurturing, home from home environment where children's needs and interests inspire planning to extend learning. Children make use of a range of indoor and outdoor spaces with the best resources which allow children to maximise their learning experience. All of our staff members are carefully selected. We foster a culture where staff are warm and caring to ensure supportive relationships with children and families.

To book a visit or reserve a place please contact the office

or scan the QR code:



020 7525 9033

office@brunswickpark.southwark.sch.uk

SCAN ME

| Learning for living through respect, support and challenge |

Term Dates 2022/2023

ACADEMIC YEAR 2022-2023

Autumn Term

HALF TERM 1: Thursday 1 September 2022 to Friday 21 October 2022

**INSET DAYS ON THURSDAY 1 SEPTEMBER AND FRIDAY 2 SEPTEMBER -
CHILDREN RETURN ON MONDAY 5 SEPTEMBER**

HALF TERM BREAK: Monday 24 October 2022 to Friday 28 October 2022

HALF TERM 2: Monday 31 October 2022 to Friday 16 December 2022

INSET DAY MONDAY 31 OCTOBER - CHILDREN RETURN ON TUESDAY 1 NOVEMBER

Spring Term

HALF TERM 3: Tuesday 3 January 2023 to Friday 10 February 2023

INSET DAY ON TUESDAY 3 JANUARY - CHILDREN RETURN ON WEDNESDAY 4 JANUARY

HALF TERM BREAK: Monday 13 February 2023 to Friday 17 February 2023

HALF TERM 4: Monday 20 February 2023 to Friday 31 March 2023

Summer Term

HALF TERM 5: Monday 17 April 2023 to Friday 26 May 2023

(May Day bank holiday will be taken on 1 May)

HALF TERM BREAK: Monday 29 May 2023 to Friday 2 June 2023

HALF TERM 6: Monday 5 June 2023 to Friday 21 July 2023

INSET DAY MONDAY 5 JUNE - CHILDREN RETURN ON TUESDAY 6 JUNE

Children finish at 2.00pm on 16 December 2022, 31 March 2023 and 21 July 2023

The students and staff at HAB welcome you to join us for one of our **Year 6 open mornings this Summer**, to find out about how we can help your child:



OUTSTANDING
IN EVERY CATEGORY
Ofsted, 2019

At HAB we have an uncompromising and caring approach

- Make a **smooth transition** from primary to secondary school.
- Set **high expectations** for themselves as they develop into a confident young person.
- Achieve their **full potential** and the greatest levels of academic success.

Our permanent specialist teachers challenge each student to stretch themselves, both in lessons and when planning for their future, so that they achieve their personal best.

Our care, guidance and support for each student ensures that they feel safe, make friends and receive expert guidance throughout their time with us.

Our students thrive in an environment that celebrates ambition and creativity, with an unrivalled range of opportunities beyond the classroom.

Spend time at HAB with your child on one of the open mornings below to see for yourselves the difference that we could make to their future.

Year 6 Open Mornings 2022

Wednesday 28th September Monday 10th October
Wednesday 5th October Wednesday 12th October
Open Evening Thursday 6th October 16.30 - 19.00

9.15am arrival for a tour with the welcome presentation at 10.00am.
Your visit will include a tour with HAB students, a chance to experience our lessons and an opportunity to ask the staff and our students anything your wish.
Gizlé Landman, Principal



Harris Academy Bermondsey,
55 Southwark Park Road, London SE16 3TZ

T: 020 7237 9316
E: habreception@harrisbermondsey.org.uk

www.harrisbermondsey.org.uk
@HABermondsey

Harris Federation



The Baby Bank is a collection of good quality second hand baby items donated by parents who no longer use them. We sort and distribute the items to families in need in order to help with the costs of having a baby.

To benefit from The Baby Bank, please call us on 02077085465 to book your appointment on **Tuesday and Wednesday mornings, 10am to 12:30pm**
Please note: During school holidays we will be closed

Donations of good quality baby items will be gratefully received!

We are collecting:

- Baby clothes (Newborn-24 months)
- Moses baskets and Cots
- Prams & Pushchairs
- High chairs
- Baby bouncers and Toys
- Baby blankets and Bedding
- Nappies (Newborn - size 7)
- Baby Wipes

Donations can be dropped off on Tuesday and Wednesday mornings 10am to 12.30pm



Camberwell
Salvation Army
105 Lomond Grove
Camberwell
SE5 7HG

For any inquiries please call Katy on 0207 708 5465 or 07506 602 254



Supported by the
Citizens UK PACT Project



El Baby Bank es una colección de artículos de segunda mano en buena calidad para bebés que son donados por otros padres que ya no lo utilizan. Nosotros clasificamos y distribuimos los artículos a familias necesitadas para ayudar con los costos de Tener un bebé

Para beneficiarse de El Baby Bank, por favor llámenos al 02077085465 para reservar su cita los días **martes y miércoles** en la mañana de 10 a 12:30pm

Nota: durante las vacaciones escolares estará cerrado

¡Donaciones de artículos para bebés de buena calidad serán recibidos con gratitud!

Estamos recolectando:

- Ropa de bebé (recién nacido-24 meses)
- Cestos Moisés y cunas
- Cochecitos y sillas de paseo
- Sillas altas para comer
- baby bouncers y juguetes para bebés
- Mantas y ropa de cama para bebés
- Pañales (recién nacido - talla 7)
- Toallitas para bebé

Las donaciones se pueden entregar el martes y miércoles por la mañana desde las 10am hasta 12.30 pm



Camberwell
Salvation Army
105 Lomond Grove
Camberwell
SE5 7HG

Para cualquier pregunta por favor contactarse con Katy
02077085465/07506602254



Supported by the Citizens UK PACT Project

The extraordinary life of

QUEEN ELIZABETH II



1926

Princess Elizabeth is born in London.



1945

Towards the end of World War II, 18-year-old Elizabeth joins the Auxiliary Territorial Service and trains as a driver and a mechanic.



1947

Princess Elizabeth marries Prince Philip, an officer in the Royal Navy.



1948

The princess gives birth to her first child, a boy named Charles who will grow up to be King.



1966

Her Majesty is at Wembley to see England beat West Germany (as it was called before the Berlin Wall came down) 4-2 in the World Cup final, presenting the trophy to victorious captain Bobby Moore.



1957

Her Majesty gives the first televised Christmas broadcast to the nation. 'The Queen's Speech' goes on to become a permanent and powerful tradition of the festive season.



1953

The new Queen is crowned at Westminster Abbey - the first coronation to be televised. Sales of TVs soar as many families buy one for the first time to watch the ceremony. The eventual worldwide audience is around 277 million.



1977

Britain and the Commonwealth celebrate the Queen's silver jubilee (marking 25 years on the throne). A chain of beacons is lit around the country, and thousands of street parties are held.



2015

Having ruled for 63 years, Queen Elizabeth becomes the longest-reigning monarch in British history - overtaking her great great grandmother, Queen Victoria.



2022

The nation celebrates the Queen's Platinum Jubilee with more events and street parties. Sadly, however, Her Majesty's health declines and she passes away months later, aged 96. After 70 years of rule, Queen Elizabeth II leaves a legacy of lasting affection and respect from people not only in the UK, but around the whole world.

Did you know?...

Rest well, Your Majesty - and thank you.

The Queen received her first Corgi, Susan, as an 18th birthday present. She loved that breed of dog throughout her life, going on to own another 30 of them.



In 1982, a mentally ill man broke into the palace and reached the Queen's bedroom! Reports suggest Her Majesty calmly kept him talking for 10 minutes until the security team arrived.



As Britain was still recovering from the effects of the war, the young Princess Elizabeth had to save ration coupons to buy the material for her wedding dress!



It was Queen Elizabeth who, in 1993, decided to open up Buckingham Palace to visitors from the public for the first time.

The Queen took the unusual step of inviting a TV documentary crew into Buckingham Palace in 1969. This let people see the Royal Family in a way they'd never been able to before.



To help launch the 2012 Olympics in London, Her Majesty featured in a short film where she meets super-spy James Bond, as played by Daniel Craig.



EOIR

NOS National Online Safety

#WakeUpWednesday

Written By Adrian Gray



RELEASE YOUR POTENTIAL

JOIN SOUTHWARK RUGBY CLUB

Training every Sunday September - April
Boys & Girls 5 - 17
No experience necessary

Join us 10.00 - 12.00 at our pitches
in Burgess Park - SE5 0JB

www.southwarktigers.com

From surviving to thriving



Join our research into a new parenting group for parents of children, aged 2-11, who experience strong emotions and struggle to trust in relationships.



Scan me

- Learn to manage emotions and behaviour
- Improve communication and relationships
- Meet other parents who share your experience

For more information, sign up here:

https://kclbs.eu.qualtrics.com/jfe/form/SV_3luWeTjmKHZaKYC

or contact Ellie Baker at ellie.baker@kcl.ac.uk

MUSICTHEORY LESSONS

in person
or online



Grades 1-5 + GCSE
for any age

contact: Holly Wray
hollykwrays@gmail.com

MUSICTHEORY LESSONS

Sessions available for GCSE tutoring, going through ABRSM Grades 1-5 exams and tailor made lessons to the student. All ages welcome.

Zoom session rates:

60 minutes £30
45 minutes £22.50
30 minutes £15



In person session rates:

60 minutes approx. £40

(This depends on how far I need to travel, so please don't hesitate to get in touch and ask!)

email: hollykwrays@gmail.com
phone: 07510059241
website: hollykwrays.wixsite.com/hollykwrays

Reminders to all Parents and Carers

Correct School Uniform:

Please ensure your child comes to school in the correct uniform. All children must wear black shoes or plain black trainers, black or grey school trousers or skirts and socks and Hijabs should be plain white, black or grey. Grey or black shorts or purple checked summer dresses can be worn in warm weather.

Punctuality:

Please ensure your child arrives to school on time every day; arriving late is embarrassing and missed learning time affects achievement and stops your child from reaching his or her potential.

Parking:

Picton Street is now closed to traffic from 08:30 - 09:15 and 15:00 - 16:00. If you arrive by car please factor this in, as you will need to park elsewhere and walk into Picton Street.

Safeguarding Information

The designated team for Safeguarding at Brunswick Park Primary is
Susannah Bellingham
Caroline Campion and
Thomas Moudiotis.

If you have any concerns about any child, please contact us.

We are committed to Safeguarding all children and members of our school community and take all concerns seriously.

For your information, key school policies are available on request from the School Office and can be downloaded from the school Website under the 'Our School' tab.

Please check the website and Twitter for further details about what children have been doing and learning in school.

Missed a newsletter? All newsletters are available for download from the School Website under the 'News' tab.

<http://www.brunswickparkprimary.co.uk>

Attendance Update

Brunswick Park's Whole School Attendance Target is 97%. We understand that children may at times be sick and too ill to attend school, but they are expected to attend on all the other days. Children attend school for 190 days a year out of 365, leaving 175 days for holidays. If your child needs to be absent from school for exceptional reasons, you need to complete an Exceptional Leave Request Form in good time beforehand, available on the website and from the School Office.

Remember - don't book holiday in term time - even if the tickets are cheaper - as it cannot be authorised.

Thank you!

Whole School Attendance Target: 97%

Right to Reply:

16/09/22: Please email the address below to give us constructive suggestions or comments, including your name and your child's class.

Thank you.

office@brunswickpark.southwark.sch.uk