

# Brunswick Park Primary School

## e-Newsletter



**Brunswick Park**  
Primary School

Friday 26 November 2021

Tel: 020 7525 9033

[www.brunswickparkprimary.co.uk](http://www.brunswickparkprimary.co.uk)

Dear Parents and Carers

December's Focus Value is **PEACE**

The weather has certainly become wintrier recently, which reminds us there are only 3 weeks left until the end of the Autumn Term. The countdown begins! All the dates you need are below, and on the school website, so you can make sure you and your children are prepared for one of the busiest times in the school calendar:

|                     |   |
|---------------------|---|
| <b>8-9 December</b> | <b>Key Stage 1 Production of Baubles</b>  |
| <b>10 December</b>  | <b>Winter Fair and Save the Children Christmas Jumper/Celebration Clothes Day</b> |
| <b>14 December</b>  | <b>Children's Christmas Lunch</b>   |
| <b>15 December</b>  | <b>EYFS and KS1 Parties + a visit from Father Christmas</b>                       |
| <b>15 December</b>  | <b>Years 3/4 Disco</b>  |
| <b>16 December</b>  | <b>Years 5/6 Disco</b>  |
| <b>17 December</b>  | <b>End of Term - children finish at 2pm</b>                                       |

In this Newsletter you will find details of the Brunswick Park Families Association Winter Fair, on 10 December, which I hope you will be able to attend. The children are very enthusiastic about it. Volunteers have been working extremely hard to make the Association's first event something special, and if the quality of the Raffle Prizes is anything to go by it will be great. Do come along to support them, and to raise much-needed funds for the children.

Also on that day is Christmas Jumper/Celebration Clothes Day, to raise money for the charity Save the Children. Children (and staff) are invited to come to school that day wearing a Christmas jumper, celebration or party clothes or their own clothes with a donation for Save the Children: £1 is the suggested amount, but this is of course at your discretion. There are more details of the children's fundraising efforts later in the Newsletter. There is a change to our term dates courtesy of Her Majesty the Queen. In honour of her Platinum Jubilee there is an additional Bank Holiday in 2022. As it falls in the Summer Half Term on 3 June, schools have been given permission to take it at another time. At Brunswick we will take it at the end of the Summer Term, so the last day at school for the children will now be TUESDAY 19 July 2022.

And finally, a bit about COVID-19. The school has had 4 confirmed cases amongst the children this week, so I am reminding parents and carers to be vigilant for any symptoms to avoid it spreading. If your child feels unwell, do a Lateral Flow Test at home; if the test is positive or inconclusive, get a confirmatory PCR test, follow the NHS instructions and inform the School Office Staff. We will keep our events for parents and carers under review, and encourage all visitors inside the school to wear a face covering. If it becomes unsafe to welcome parents and carers inside the building for the Key Stage 1 production of Baubles, we will film and stream it. We want you and the children to have the holiday and celebration you should have had last year and couldn't. COVID has not gone away, so we continue to manage infection control carefully to keep life at school for the children as normal as possible.

Wishing you a peaceful, safe and healthy fortnight ahead.

Susannah Bellingham  
Head Teacher



**THE BRUNSWICK PARK  
FAMILIES ASSOCIATION**

presents the 2021

# Winter Fair

Friday 10th December  
KS2 Playground



**Food & Hot Chocolate • Bake Sale  
Face Painting • Crafts & Games  
Music • Book Stall • And more!**



All fundraising will benefit the Brunswick Park Families Association, raising funds in aid of



**Brunswick Park  
Primary School**





# **BPFA RAFFLE**

**Buy a raffle ticket today and support the school!**

**Prizes include:**

- a £50 voucher for gastropub The Crooked Well**
- a £20 voucher for Cheeky Burger**
- a bottle of wine**
- vouchers for money off children's shoes**
- many more festive prizes!**

**Raffle prize winners will be drawn at the Winter Fair on Friday 10 December.**

**Tickets are £1 each, or 5 for £4.**

**Buy for yourselves and tell your friends and family!**

**Tickets are on sale at the school gates most days leading up to the fair and during the event.**

**You can also email ticket requests to [brunswickparkfamilies@gmail.com](mailto:brunswickparkfamilies@gmail.com)**

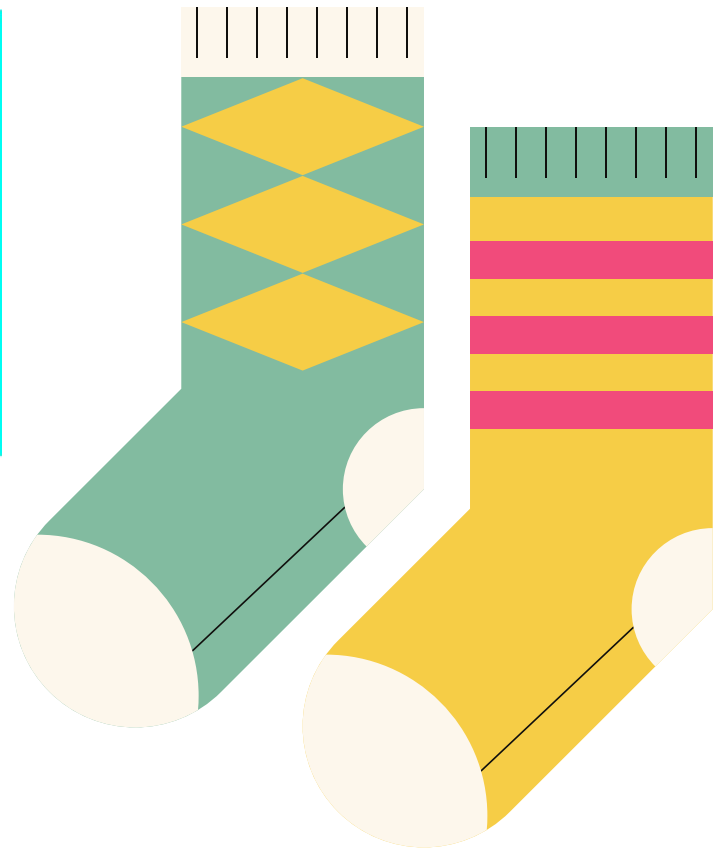
**All funds raised will benefit the Brunswick Park Families Association, and will help the school get vital resources!**



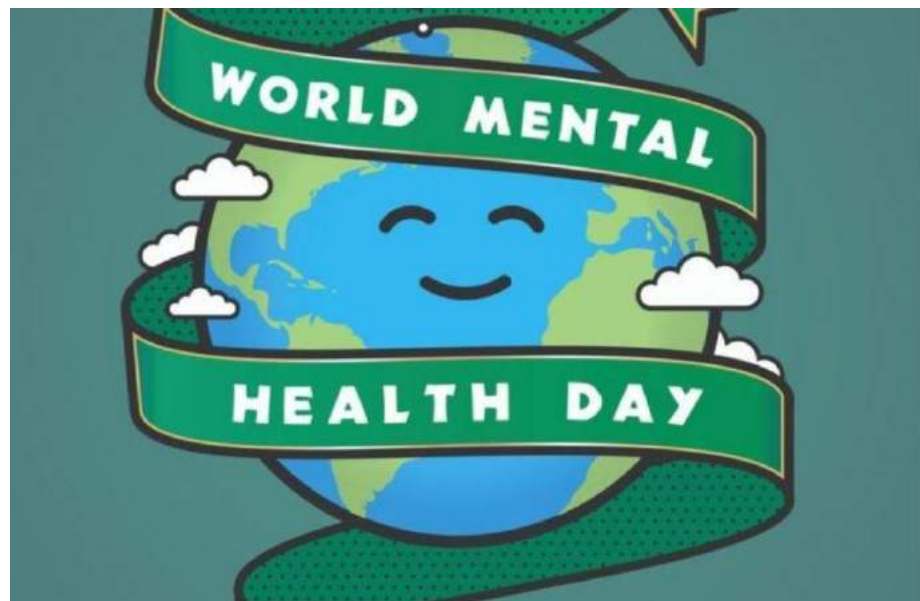
<https://anti-bullyingalliance.org.uk/get-involved-0/donate>



**We wore odd socks in November and raised £54.31 for the Anti-Bullying Alliance**



**We wore green and raised £205.76 for the charity Young Minds on World Mental Health Day in October**



**How much will we raise for Save the Children on 10 December on Christmas Jumper/Celebration Clothes Day?**



# Reading for Pleasure



We want all our children to value books and love reading, and are focusing this year on reading for pleasure.

Ms Huszar has transformed the library on the ground floor into a space where children can explore every aspect of reading in an engaging and purposeful way.



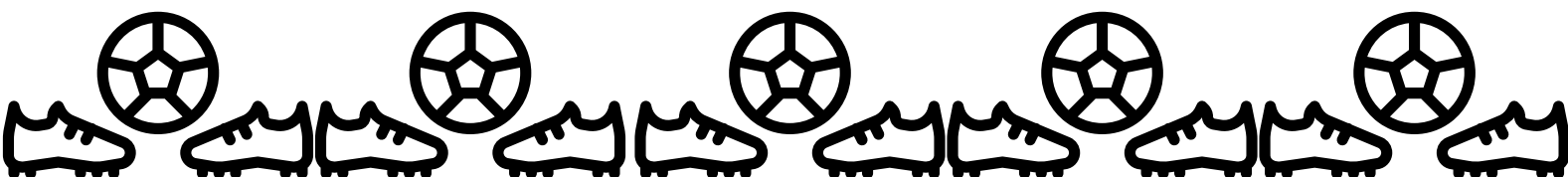
She's done an amazing job, and the children will be introduced to the new space next week.





**Our Team at the recent Year 5 Futsal competition at City of London Academy.**

**Futsal is a version of Football played largely in South America and has some different rules from the usual game played in the UK.  
The children picked up the adaptations really well and eventually finished fourth.  
We are very proud!  
Thanks go to Dominic the Football Coach who managed the team.**







@BrunswickParkPS



**Inclusion Team**  
**@InclusionBPPS**



**EYFS**  
**@EyfsBPPS**



**Year 1**  
**@Year1BPPS**



**Year 2**  
**@Year2BPPS**



**Year 3**  
**@Year3BPPS**



**Year 4**  
**@Year4BPPS**

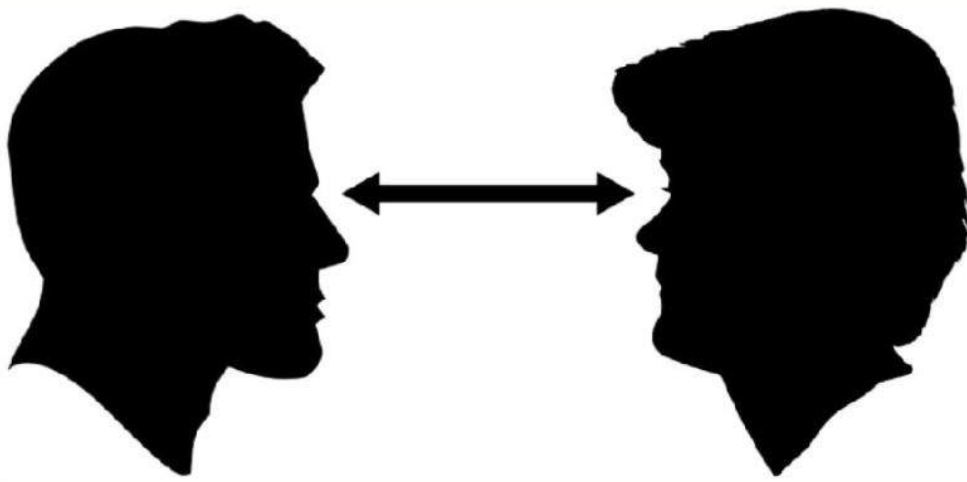


**Year 5**  
**@Year5BPPS**



**Year 6**  
**@Year6BPPS**





Encourage your child to make and maintain eye contact with the other person when speaking; they may find this uncomfortable at first, but persevere and give them praise when they do



Encourage your child to answer questions in full sentences and to make 2-way conversations where possible



Praise your child when they talk to people with confidence to develop their self-esteem and belief in the power of effective communication

Being an effective communicator is a hugely powerful life skill.

We want every child at Brunswick to communicate confidently and respectfully so they feel they are on the top step





# Term Dates 2021/2022

## Autumn Term

**HALF TERM 1:** Wednesday 1 September 2021 to Friday 22 October 2021

**INSET DAY ON WEDNESDAY 1 SEPTEMBER - CHILDREN RETURN ON THURSDAY 2 SEPTEMBER**

**HALF TERM BREAK:** Monday 25 October 2021 to Friday 29 October 2021

**HALF TERM 2:** Monday 1 November 2021 to Friday 17 December 2021

## Spring Term

**HALF TERM 3:** Tuesday 4 January 2022 to Friday 11 February 2022

**INSET DAY ON TUESDAY 4 JANUARY - CHILDREN RETURN ON WEDNESDAY 5 JANUARY**

**HALF TERM BREAK:** Monday 14 February 2022 to Friday 18 February 2022

**HALF TERM 4:** Monday 21 February 2022 to Friday 1 April 2022

## Summer Term

**HALF TERM 5:** Tuesday 19 April 2022 to Friday 27 May 2022

**INSET DAY ON TUESDAY 19 APRIL - CHILDREN RETURN ON WEDNESDAY 20 APRIL**

(May Day bank holiday will be taken on 2 May)

**HALF TERM BREAK:** Monday 30 May 2022 to Friday 3 June 2022

**HALF TERM 6:** Monday 6 June 2022 to Friday 22 July 2022

**INSET DAYS ON WEDNESDAY 20 AND THURSDAY 21 JULY; QUEEN'S PLATINUM JUBILEE BANK HOLIDAY FRIDAY 22 JULY - LAST DAY IN SCHOOL FOR CHILDREN IS TUESDAY 19 JULY 2022**

**Children finish at 2.00pm on 17 December 2021, 1 April 2022 and 19 July 2022**

## Reminders to all Parents and Carers

### Correct School Uniform:

Please ensure your child comes to school in the correct uniform. All children must wear black shoes or plain black trainers, black or grey school trousers or skirts and socks and Hijabs should be plain white, black or grey. Grey or black shorts or purple checked summer dresses can be worn in warm weather.

### Punctuality:

Please ensure your child arrives to school on time every day; arriving late is embarrassing and missed learning time affects achievement and stops your child from reaching his or her potential.

### Parking:

Picton Street is now closed to traffic from 08:30 - 09:15 and 15:00 - 16:00. If you arrive by car please factor this in, as you will need to park elsewhere and walk into Picton Street.

## Safeguarding Information

The designated team for Safeguarding at Brunswick Park Primary is  
Susannah Bellingham  
Caroline Champion and  
Thomas Moudiotis.

If you have any concerns about any child, please contact us.

We are committed to Safeguarding all children and members of our school community and take all concerns seriously.

For your information, key school policies are available on request from the School Office and can be downloaded from the school Website under the 'Our School' tab.

Please check the website for further details about what children have been doing and learning in school.

Missed a newsletter? All newsletters are available for download from the School Website under the 'News' tab.

<http://www.brunswickparkprimary.co.uk>

## Attendance Update

Congratulations to Reception and Class 3B for 99+% attendance in the last fortnight. 132 children out of 377 have 100% attendance from 2/9/21 to the 25/11/21. Well done!

Whole School Attendance for W/B 15.11.21: 95.09%

Whole School Attendance for W/B 22.11.21: 94.21%

**Whole School Attendance Target: 97%**

### Right to Reply:

26/11/21: Please email the address below to give us constructive suggestions or comments, including your name and your child's class.

Thank you.

[office@brunswickpark.southwark.sch.uk](mailto:office@brunswickpark.southwark.sch.uk)