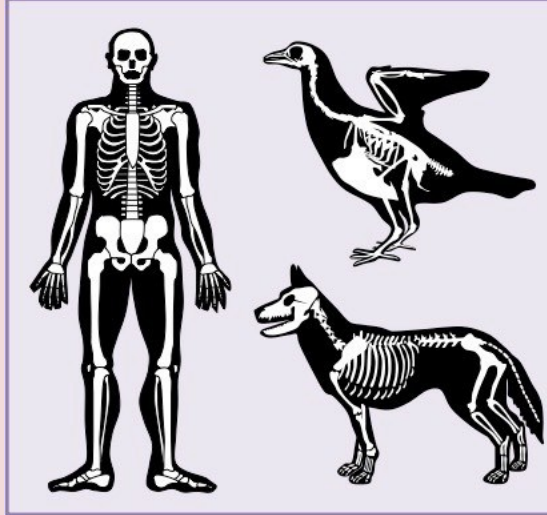


## Year 3 Spring 2 Science- Animals Including Humans

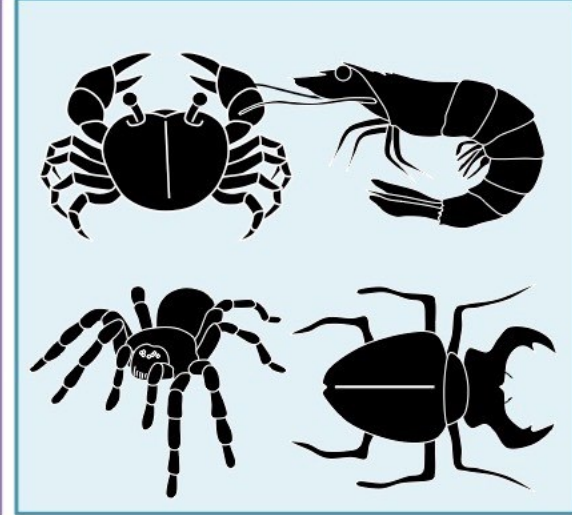
### Key facts

1. Animals have evolved over time in ways that supports their survival.
2. Carnivores have evolved to have more and stronger canine teeth which makes it easier for them to tear through and digest meat, as this is their main source of nutrition.
3. Another difference in animal groups is their skeleton.
4. Skeletons have several functions, these are;
  - Movement -the skeleton provides a structure for movement)
  - Protection – the skeleton protects many vital organs
  - Support – the skeleton provides the scaffolding for the rest of the body.
5. Some animals have endoskeletons which are internal, whereas other animal groups have exoskeletons which are found on the outside of their body and act as a protective shell.

### ENDOSKELETON (INTERNAL)



### EXOSKELETON (EXTERNAL)



### Scientific skills

- Choose an appropriate approach to answer a question
- Record my results
- Be able to report on findings from enquiries

### Key Vocabulary

- nutrition
- diet
- vitamins
- minerals
- protein
- endoskeleton
- exoskeleton
- protect
- support